

Organigramma Proposto

2022 - 2024

Aggiornamento 2024

710 - ASST DEI SETTE LAGHI

Sistema Socio Sanitario



Regione
Lombardia

Legenda



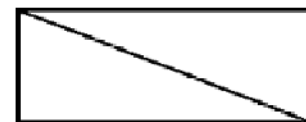
Dipartimento Gestionale



Dipartimento Funzionale



SC – Struttura Complessa



SSD – Struttura Semplice Dipartimentale



SS – Struttura Semplice



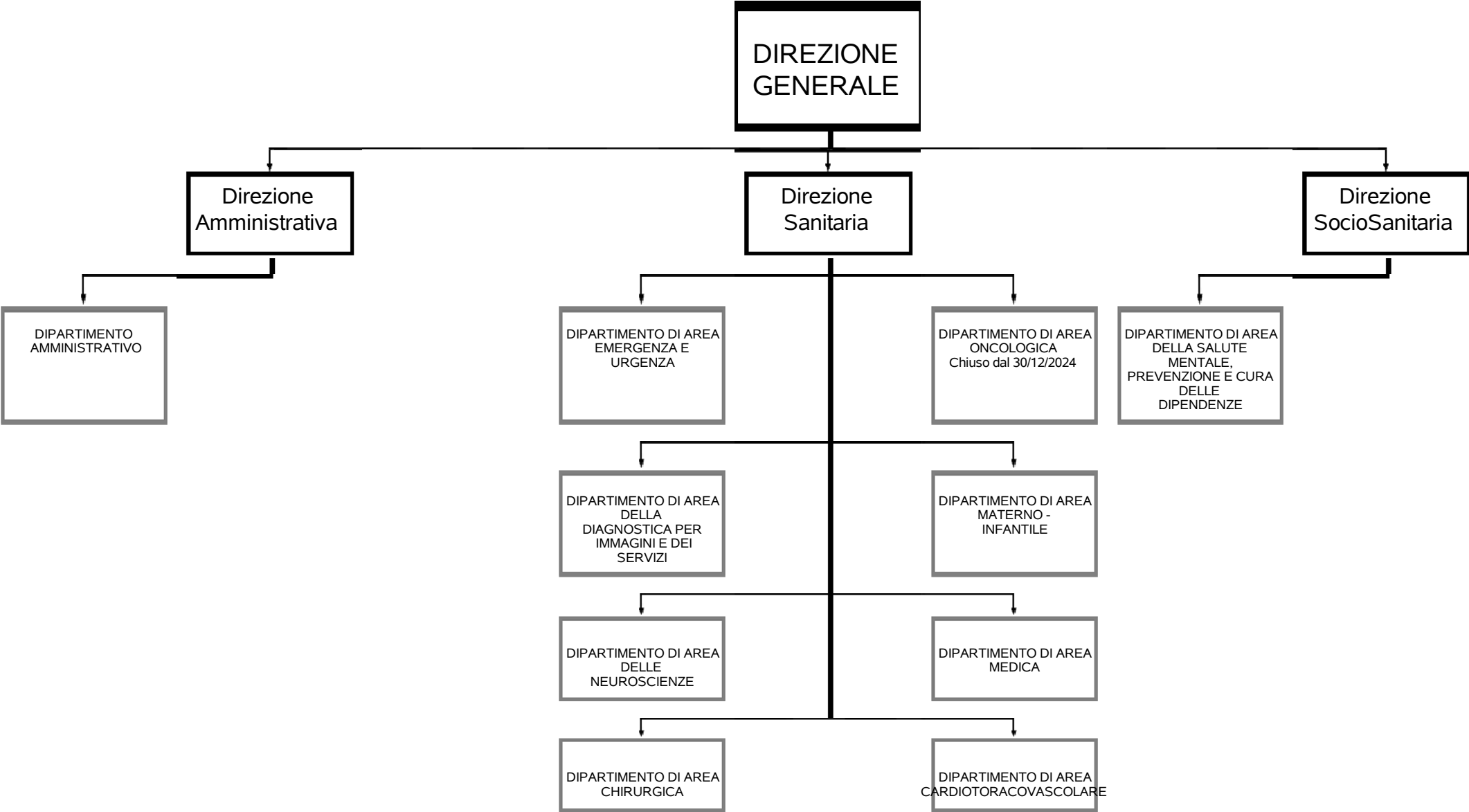
SD – Struttura Semplice Distrettuale

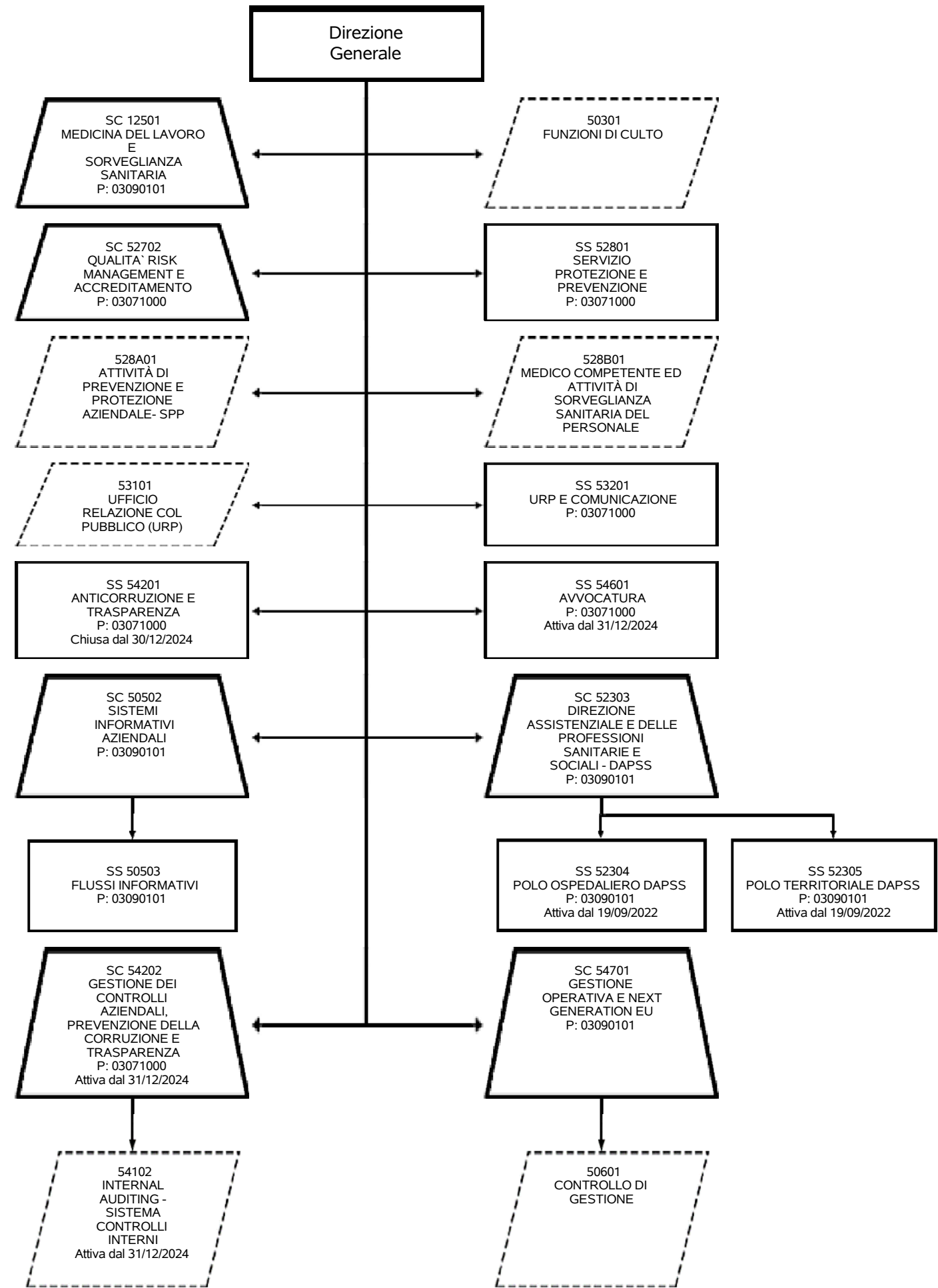


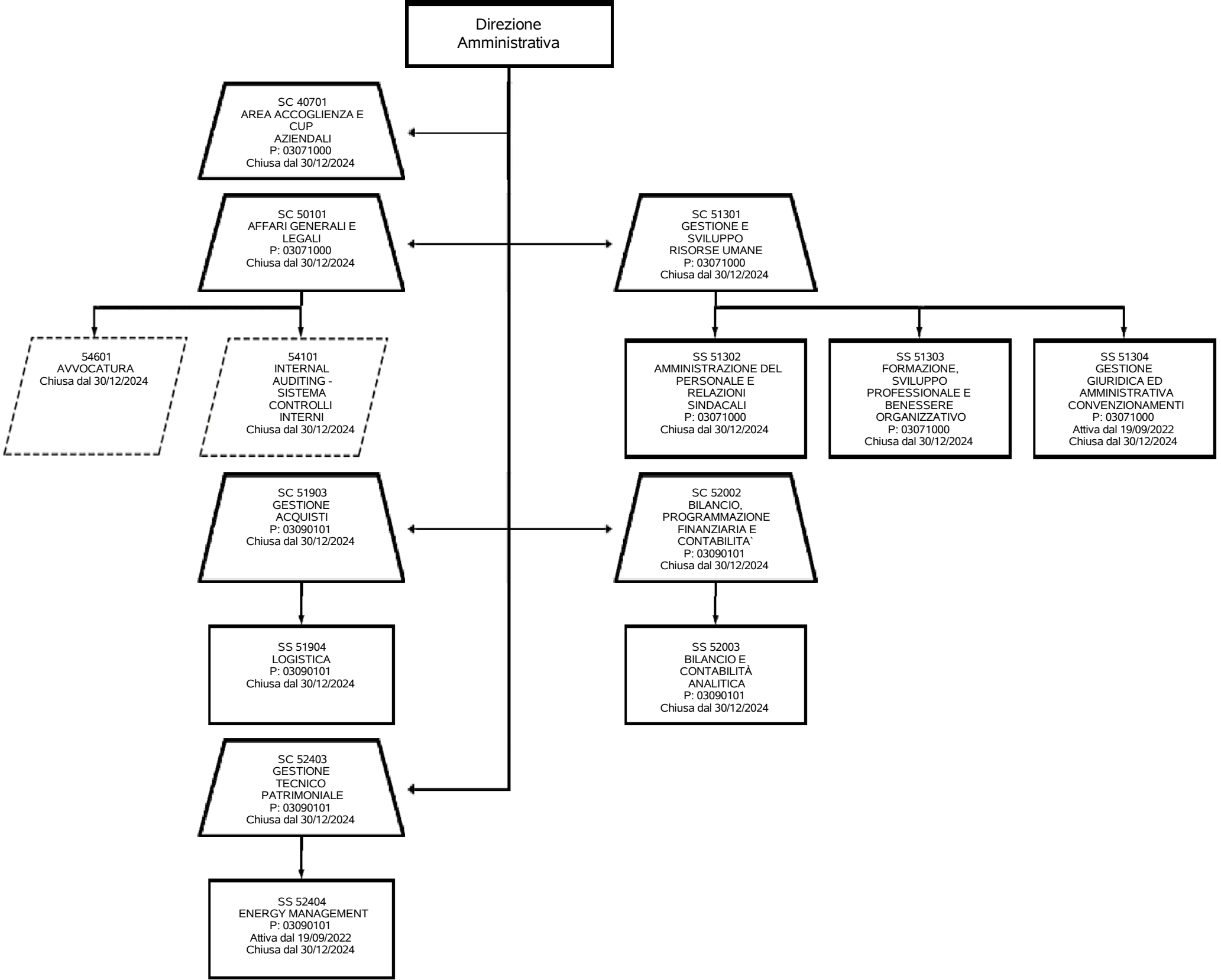
Funzione

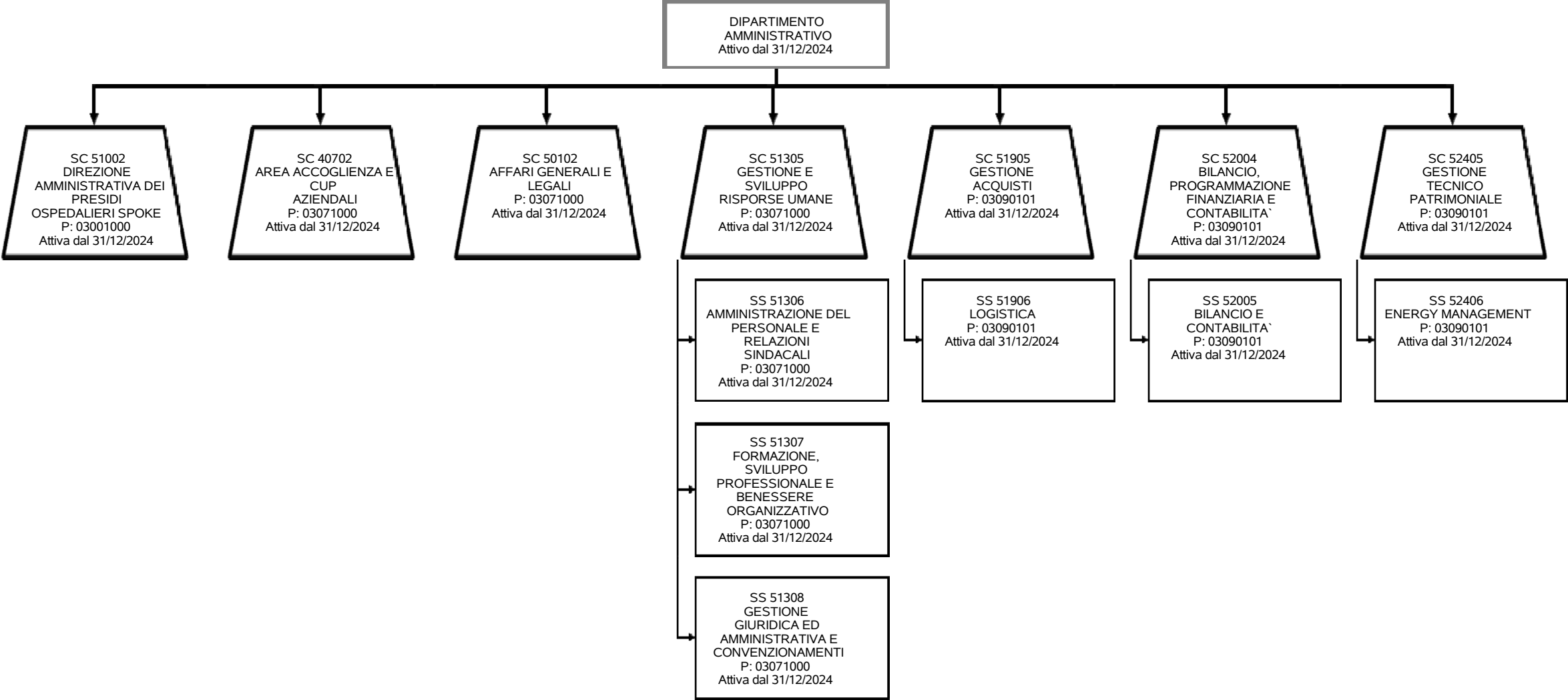


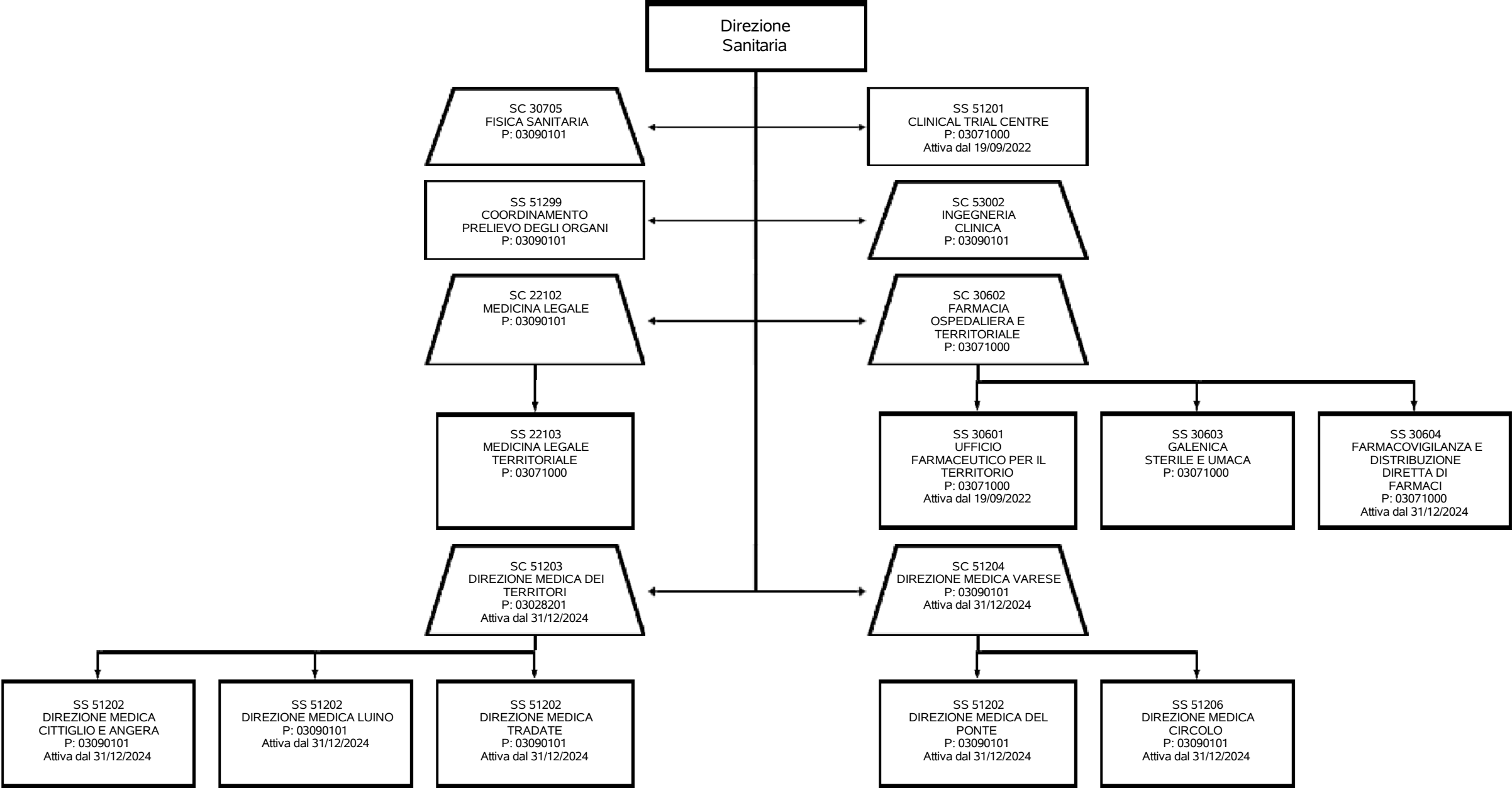
Relazione Funzionale

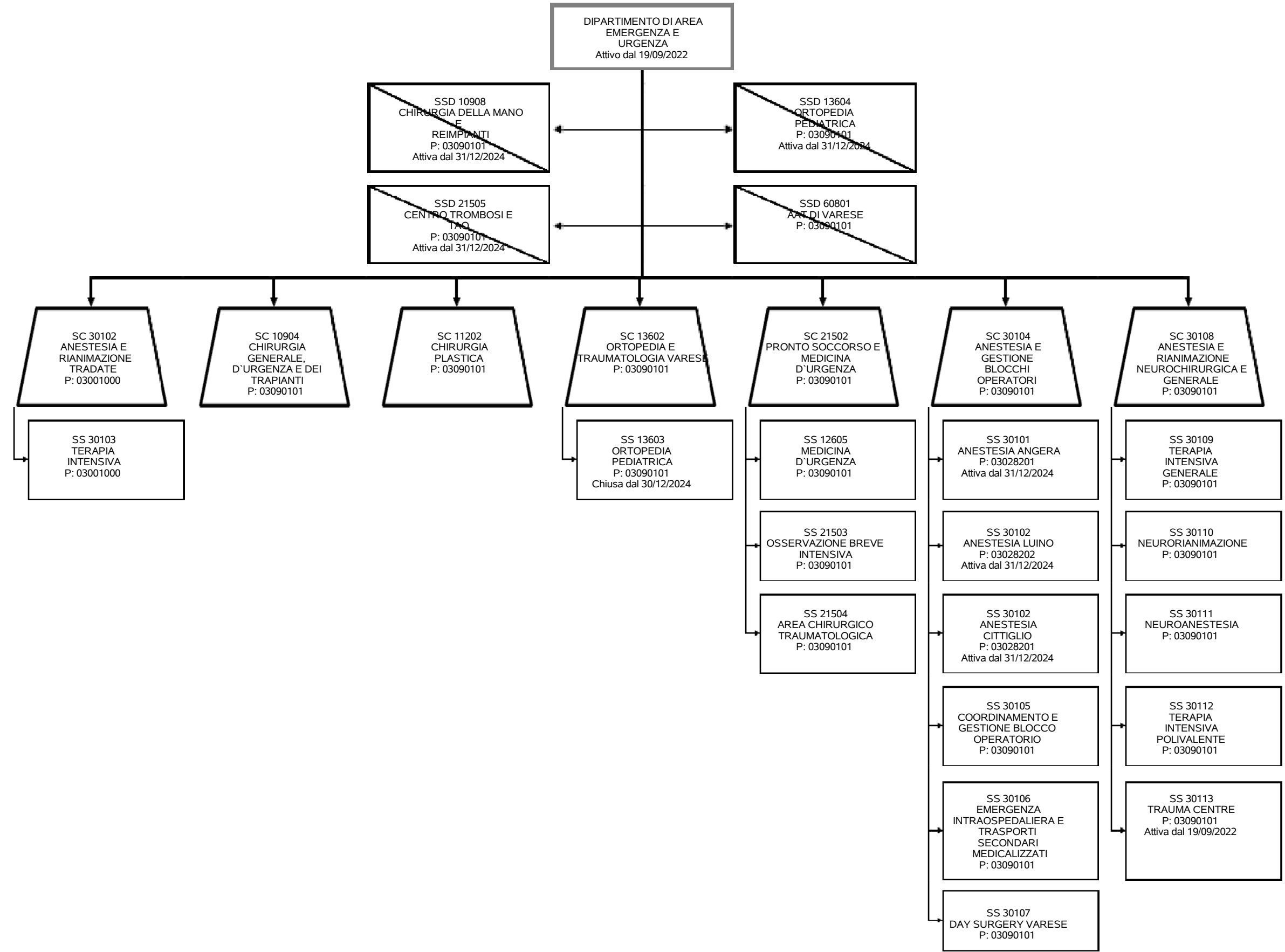


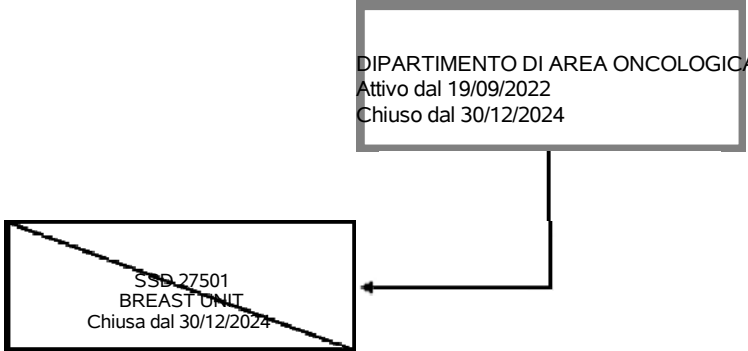


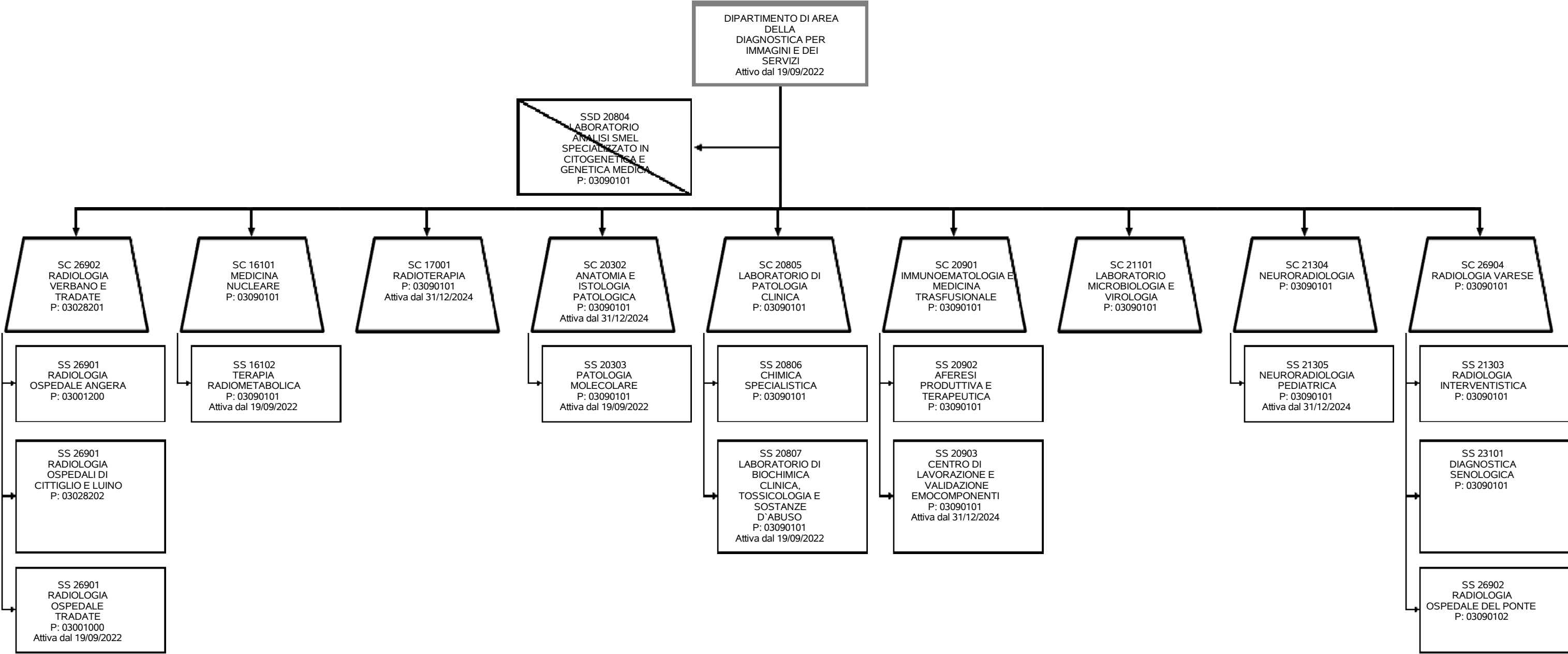


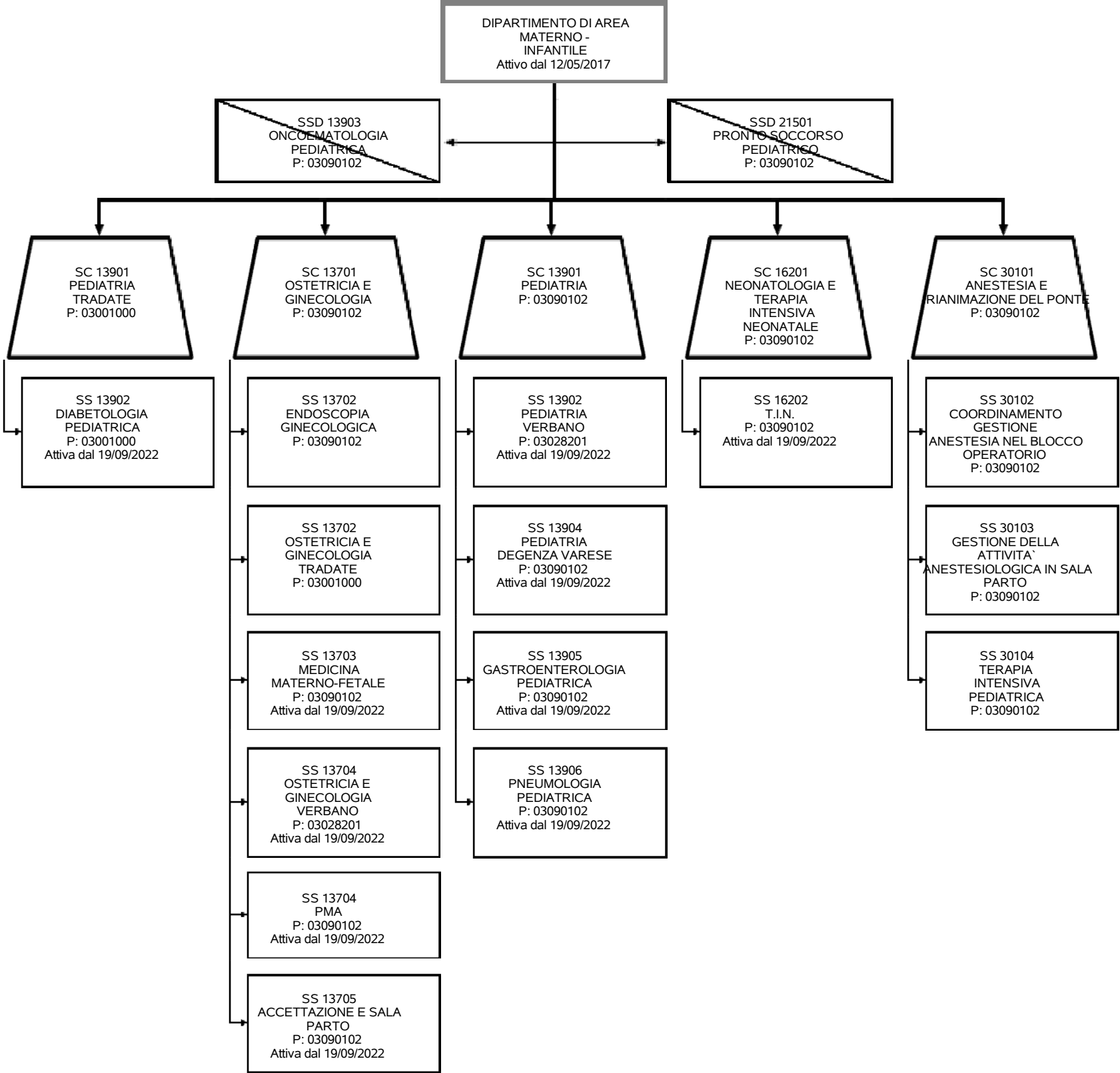


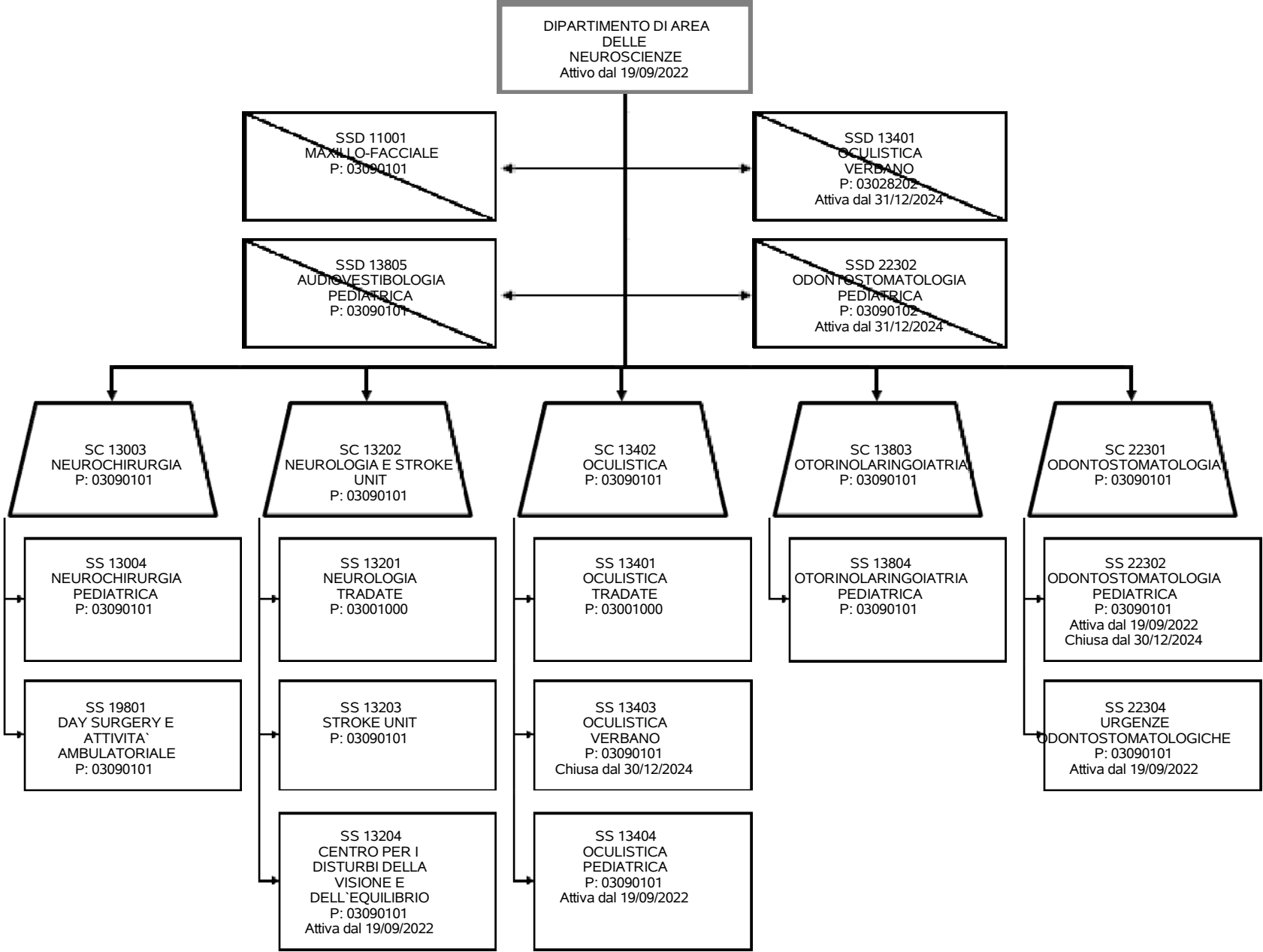


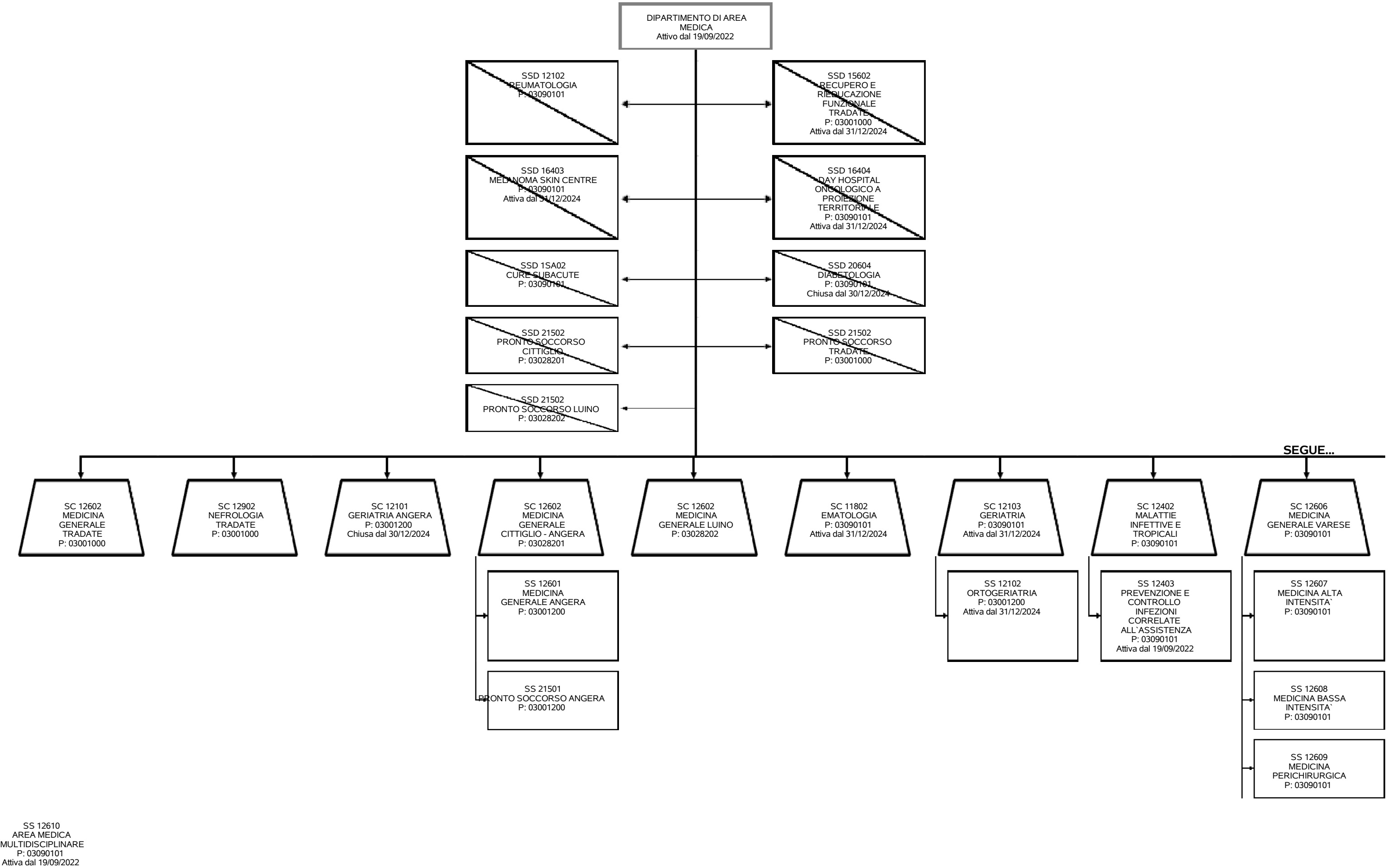












SS 30401
NUTRIZIONE
CLINICA
OSPEDALE -
TERRITORIO
P: 03090101
Attiva dal 31/12/2024

SS 30803
GESTIONE
ATTIVITA'
AMBULATORIALE
P: 03090101

