

Organigramma Proposto

727 - ASST DI PAVIA

Sistema Socio Sanitario



Regione
Lombardia

Legenda



Dipartimento Gestionale



Dipartimento Funzionale



SC – Struttura Complessa



SSD – Struttura Semplice Dipartimentale



SS – Struttura Semplice



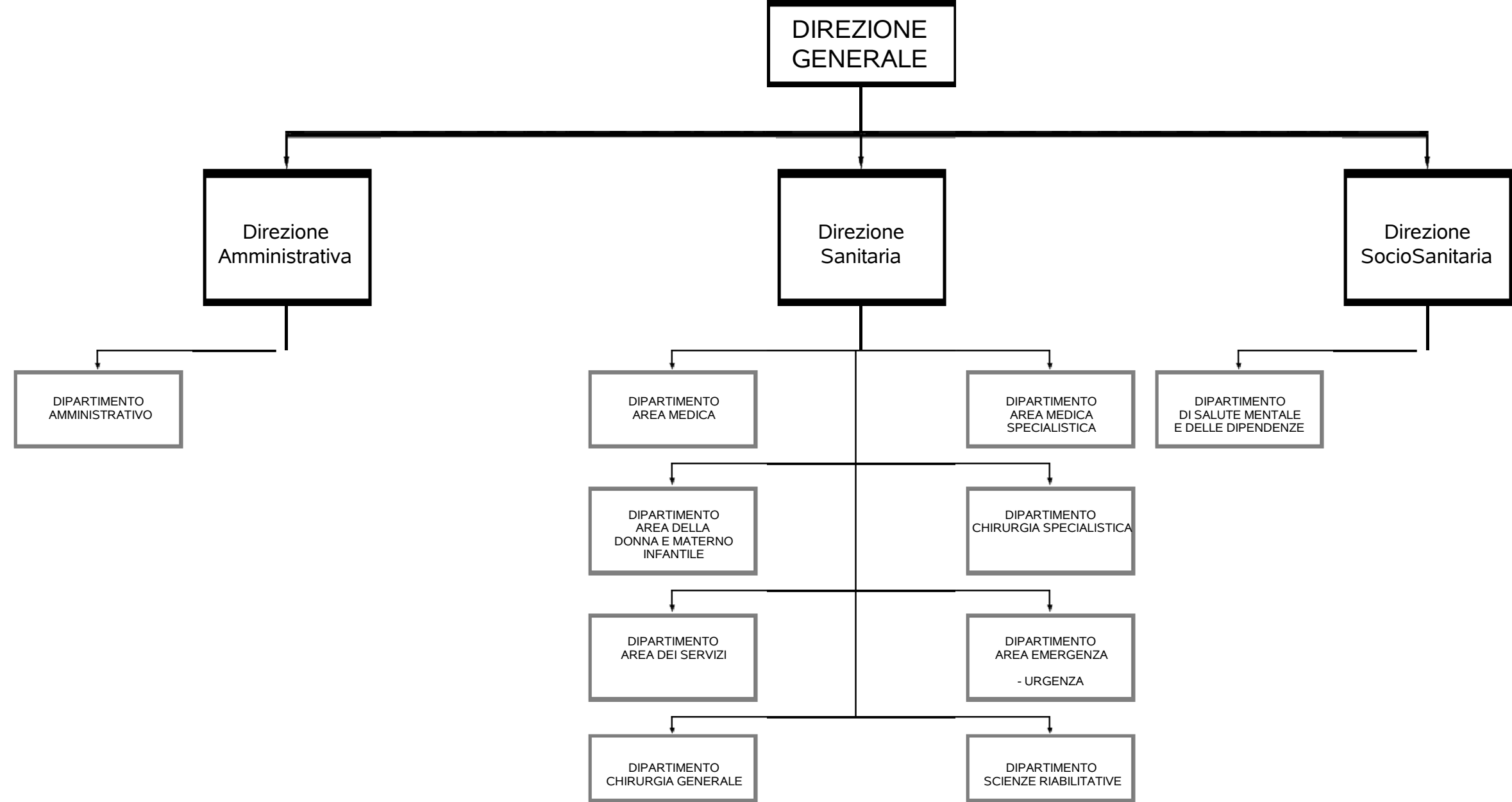
SD – Struttura Semplice Distrettuale

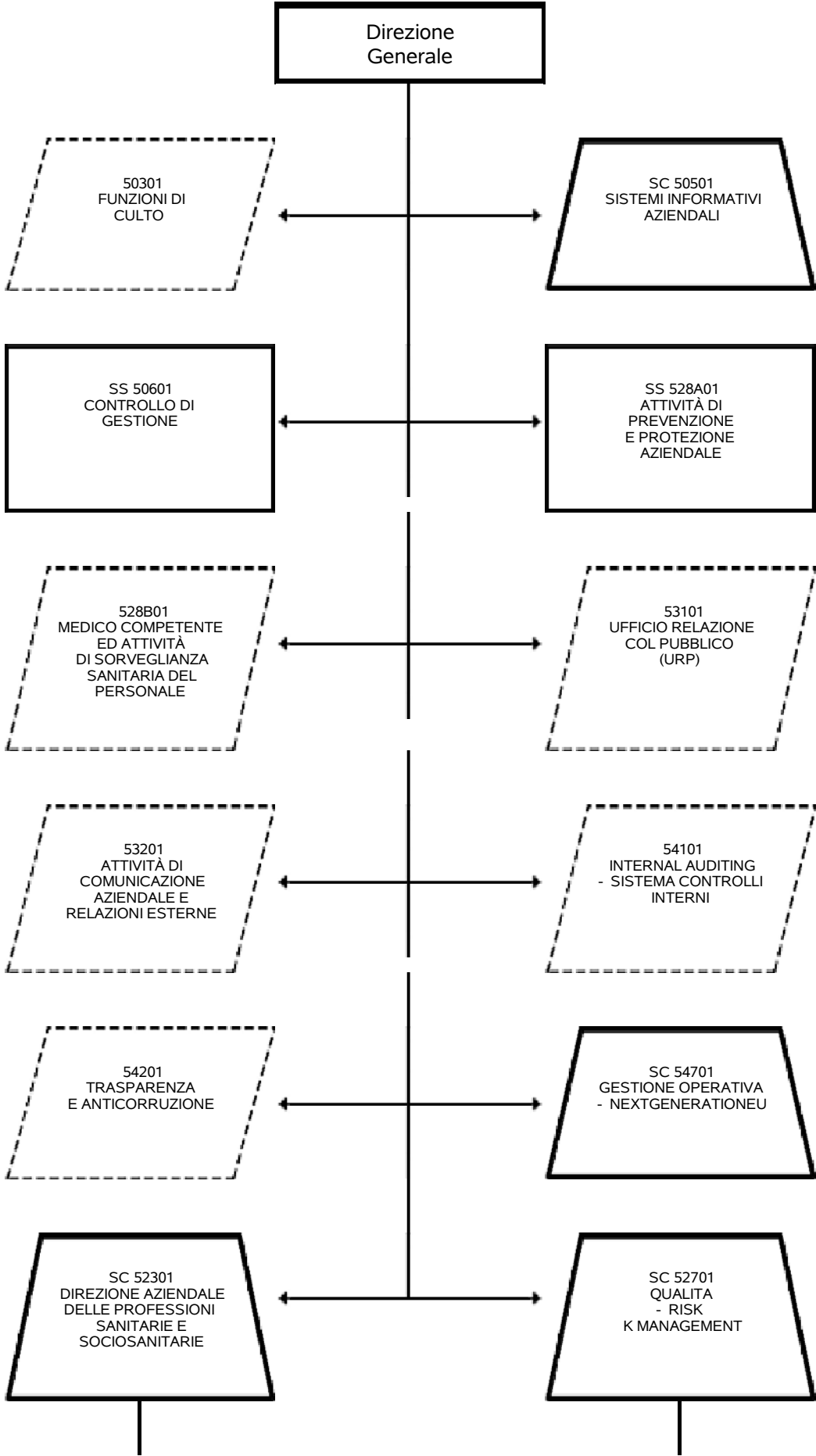


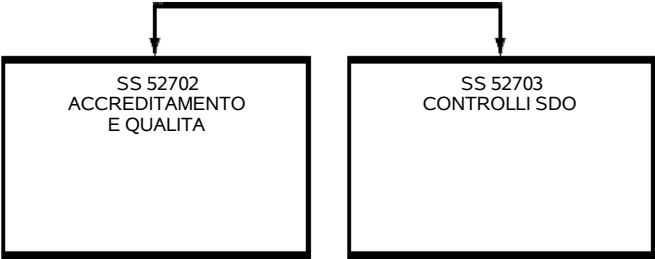
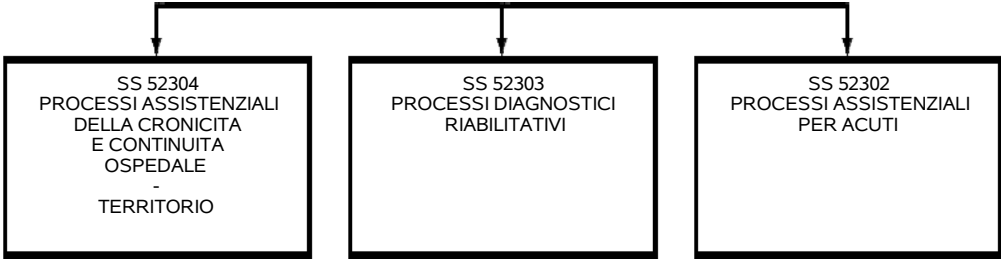
Funzione

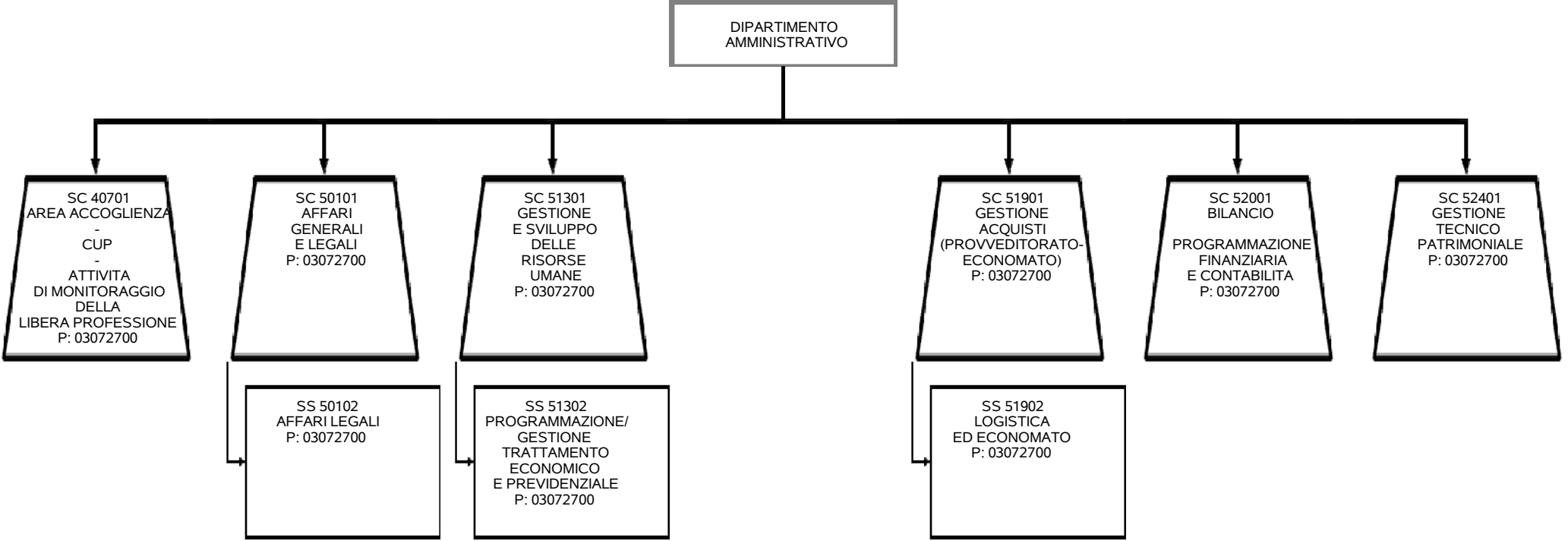


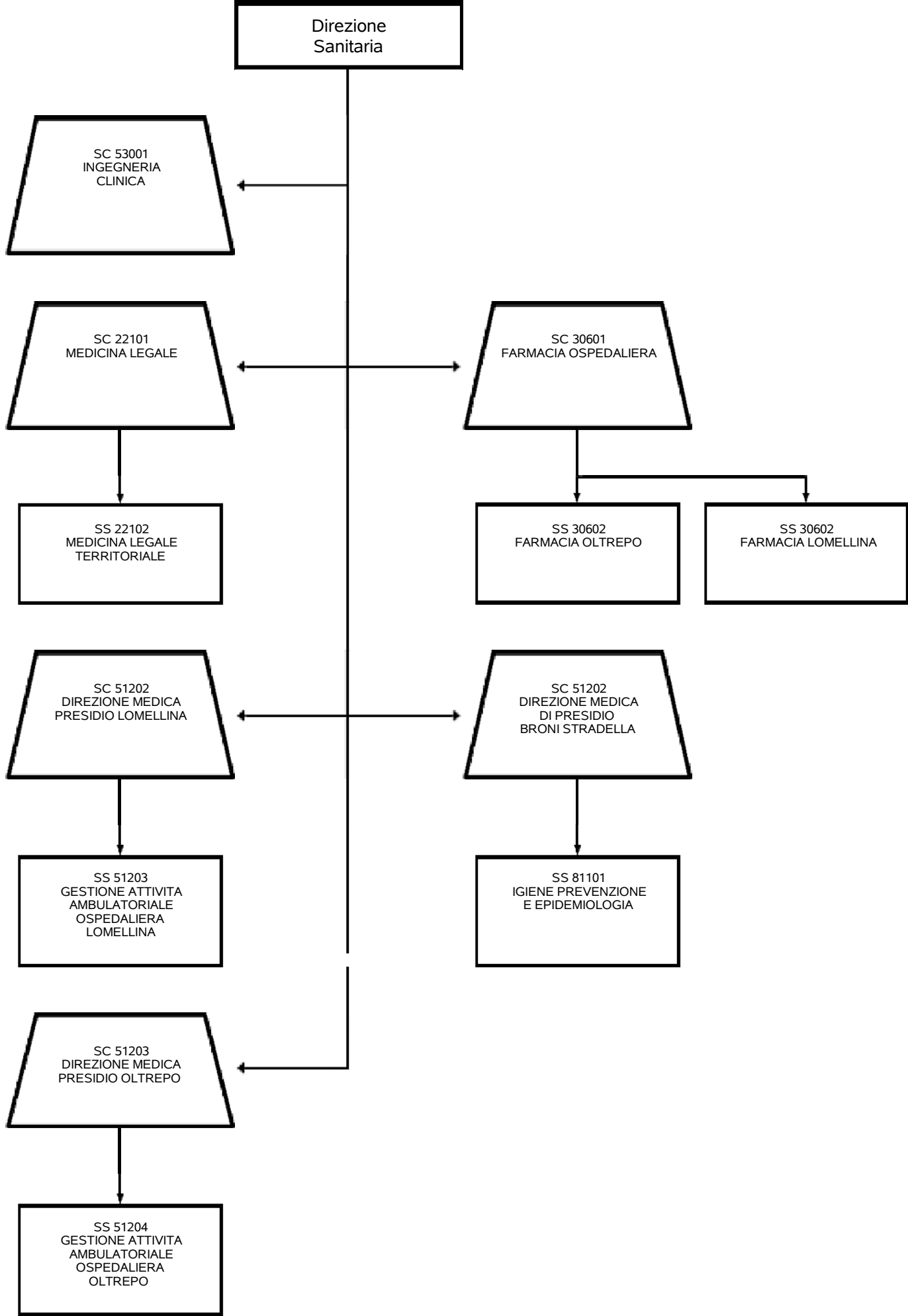
Relazione Funzionale

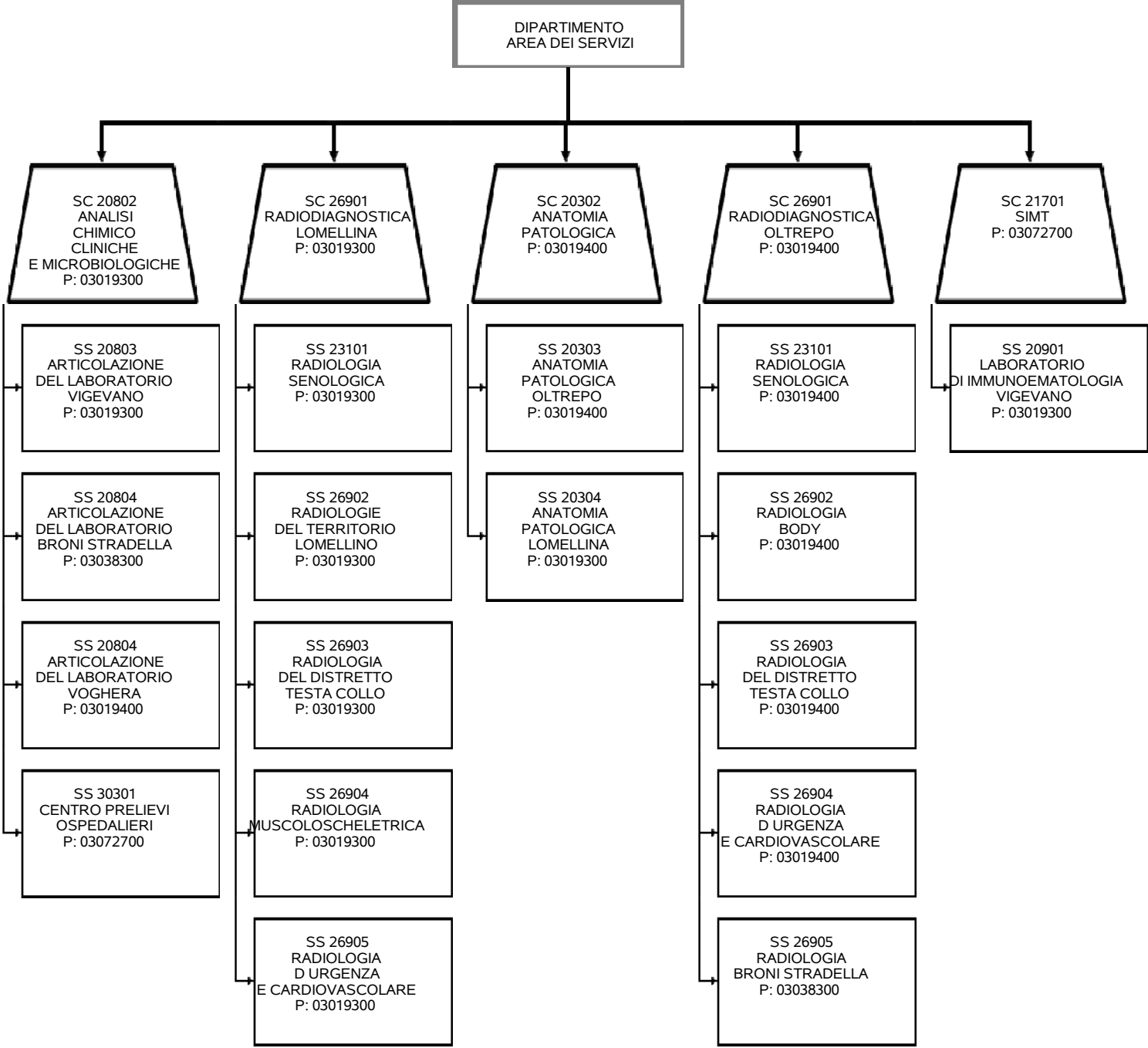


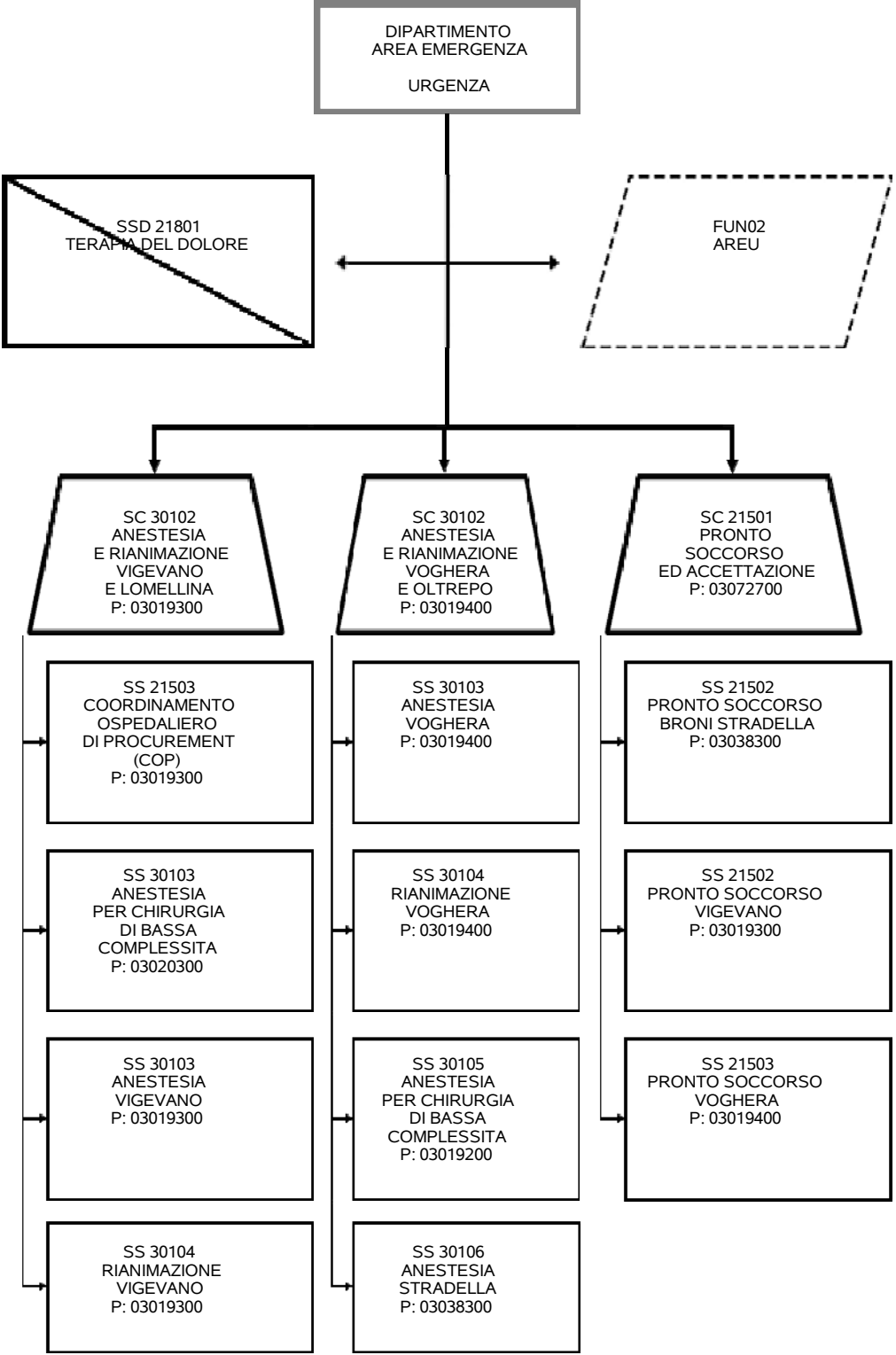


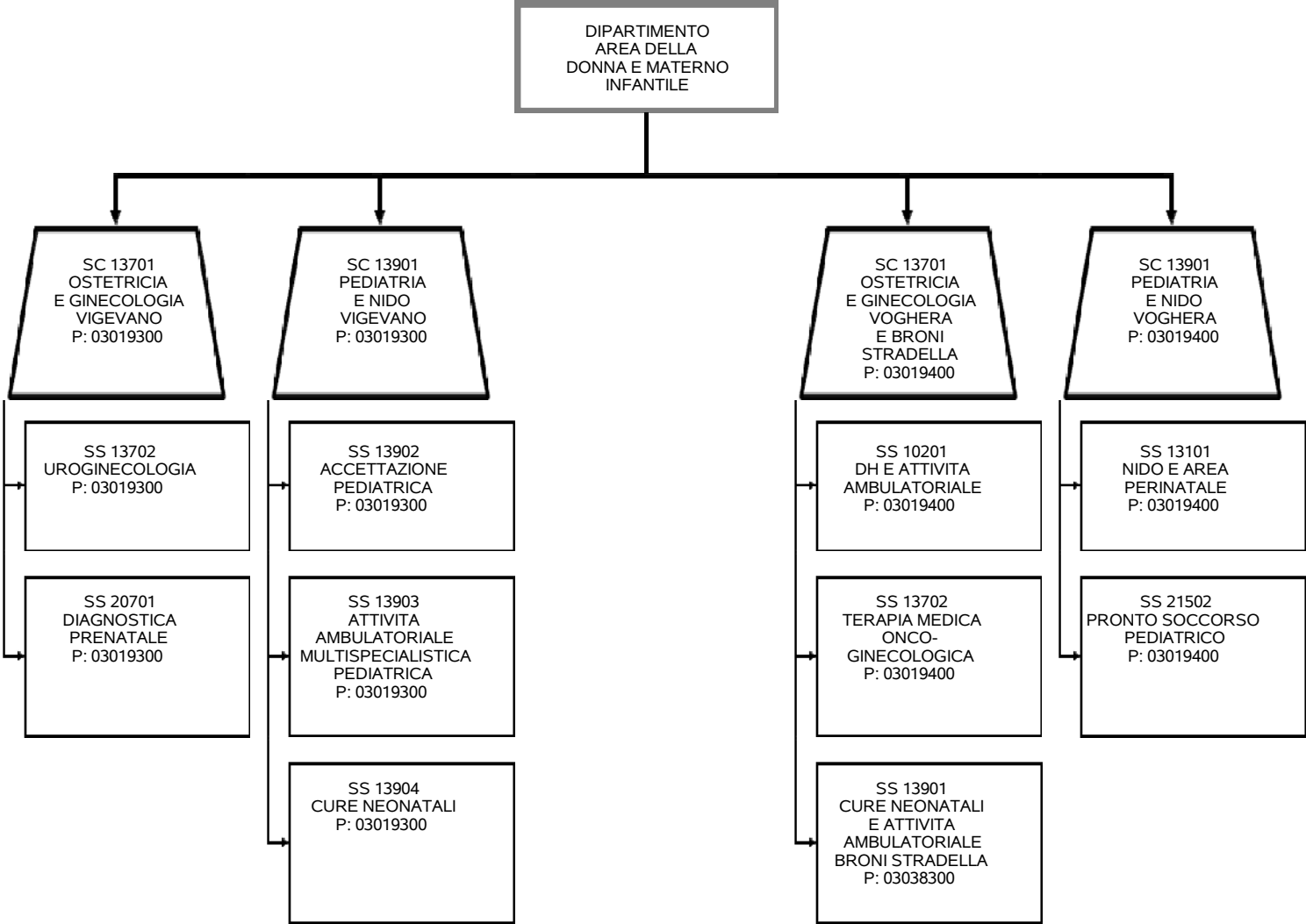


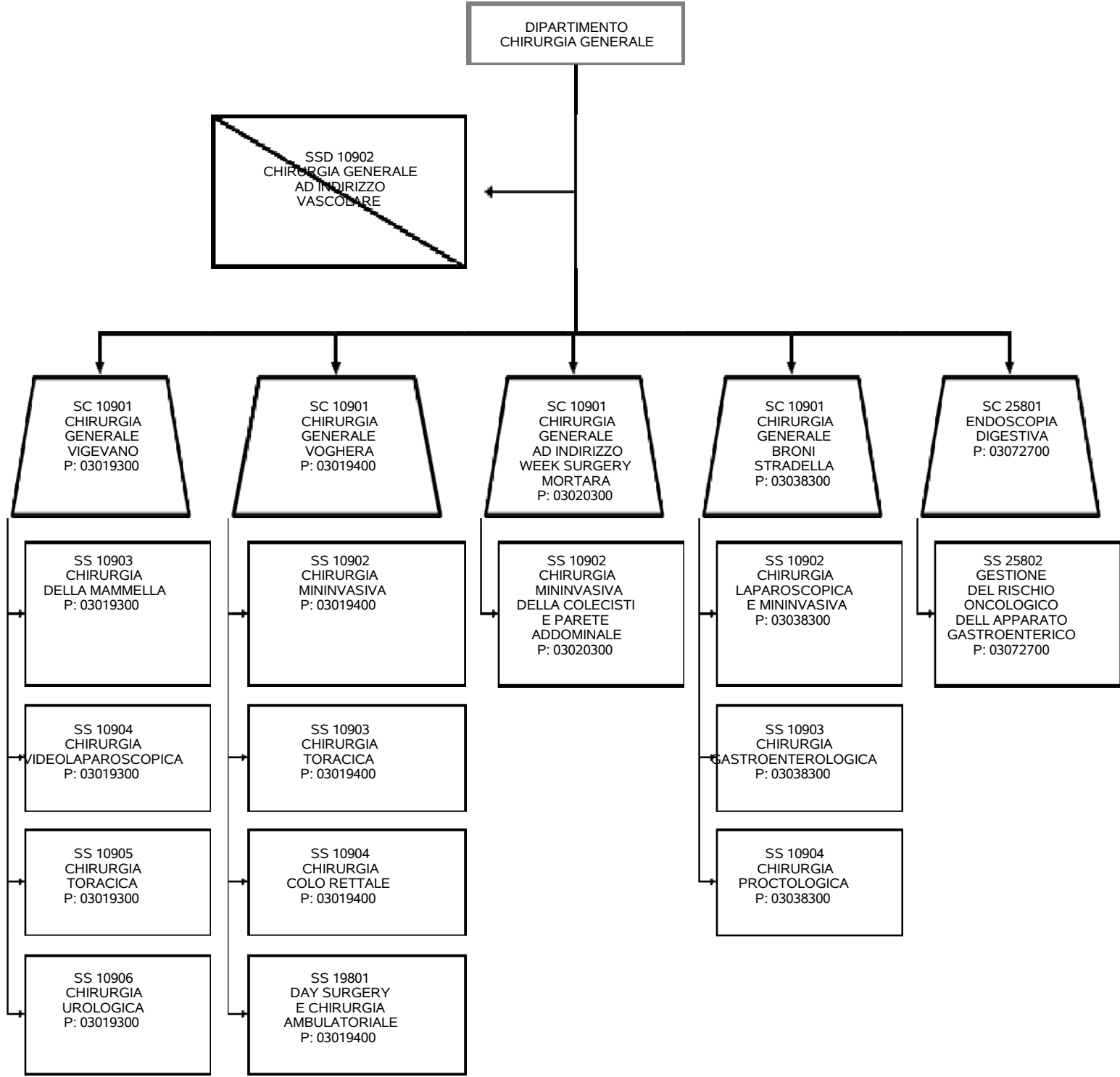


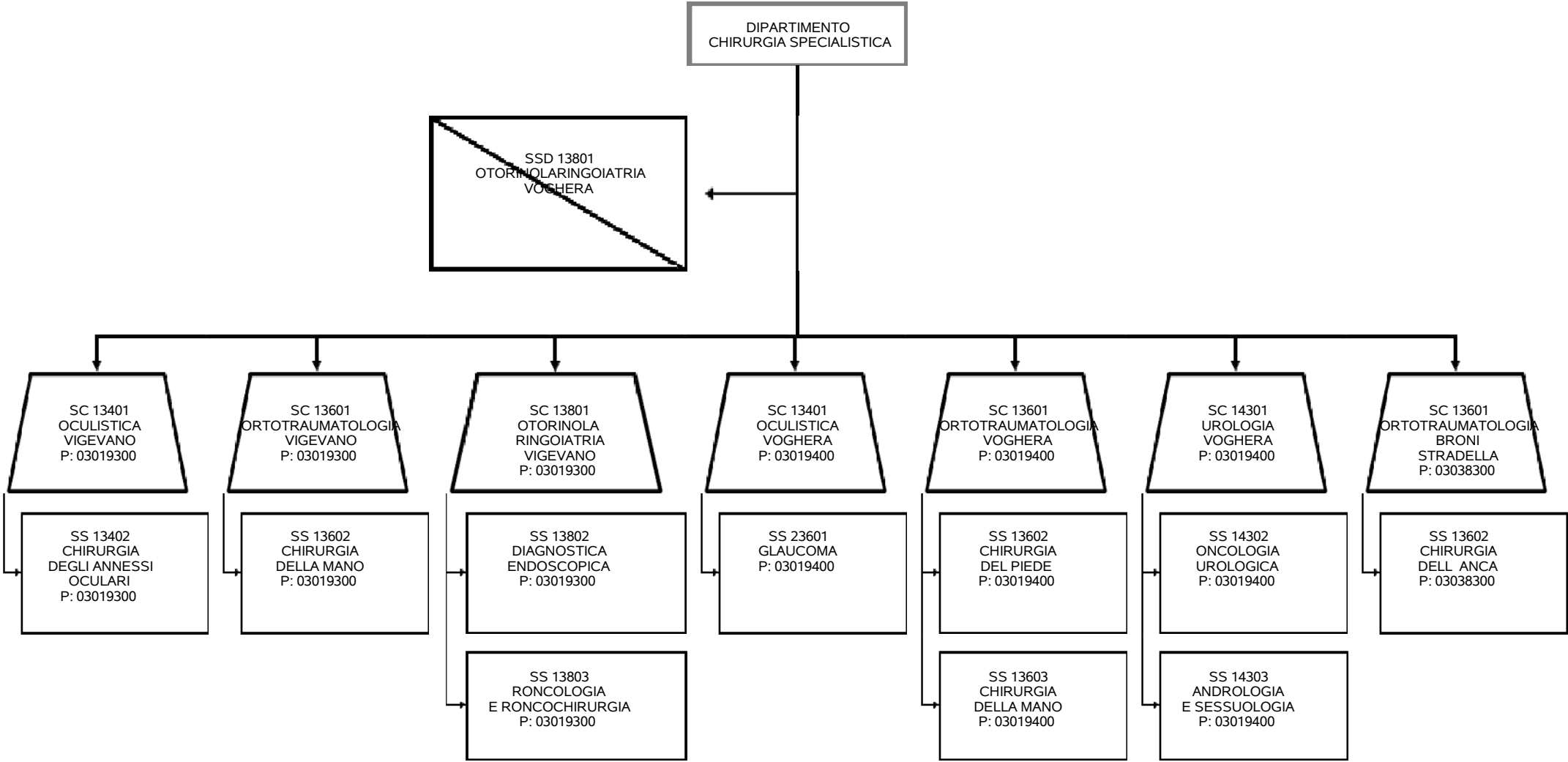


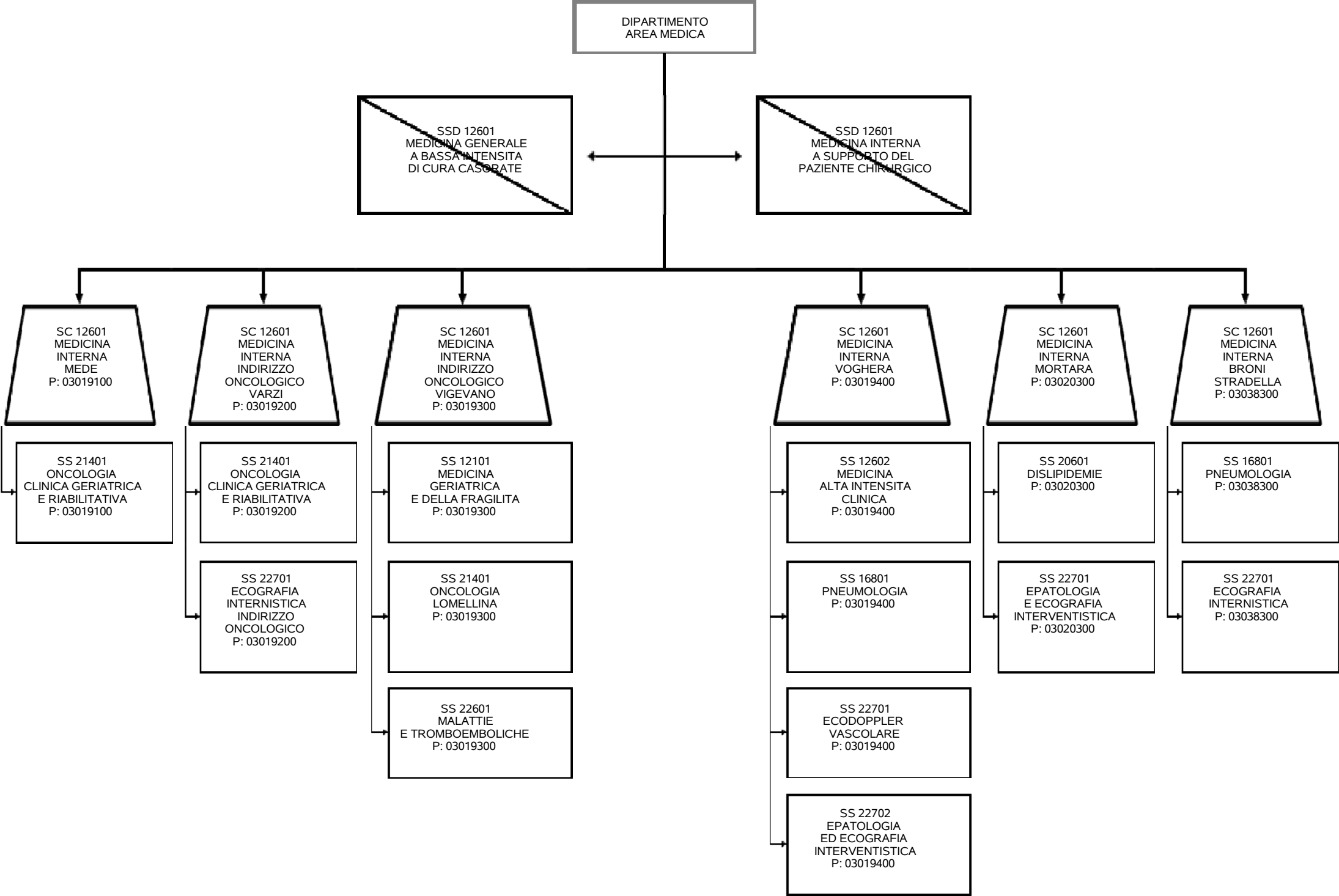


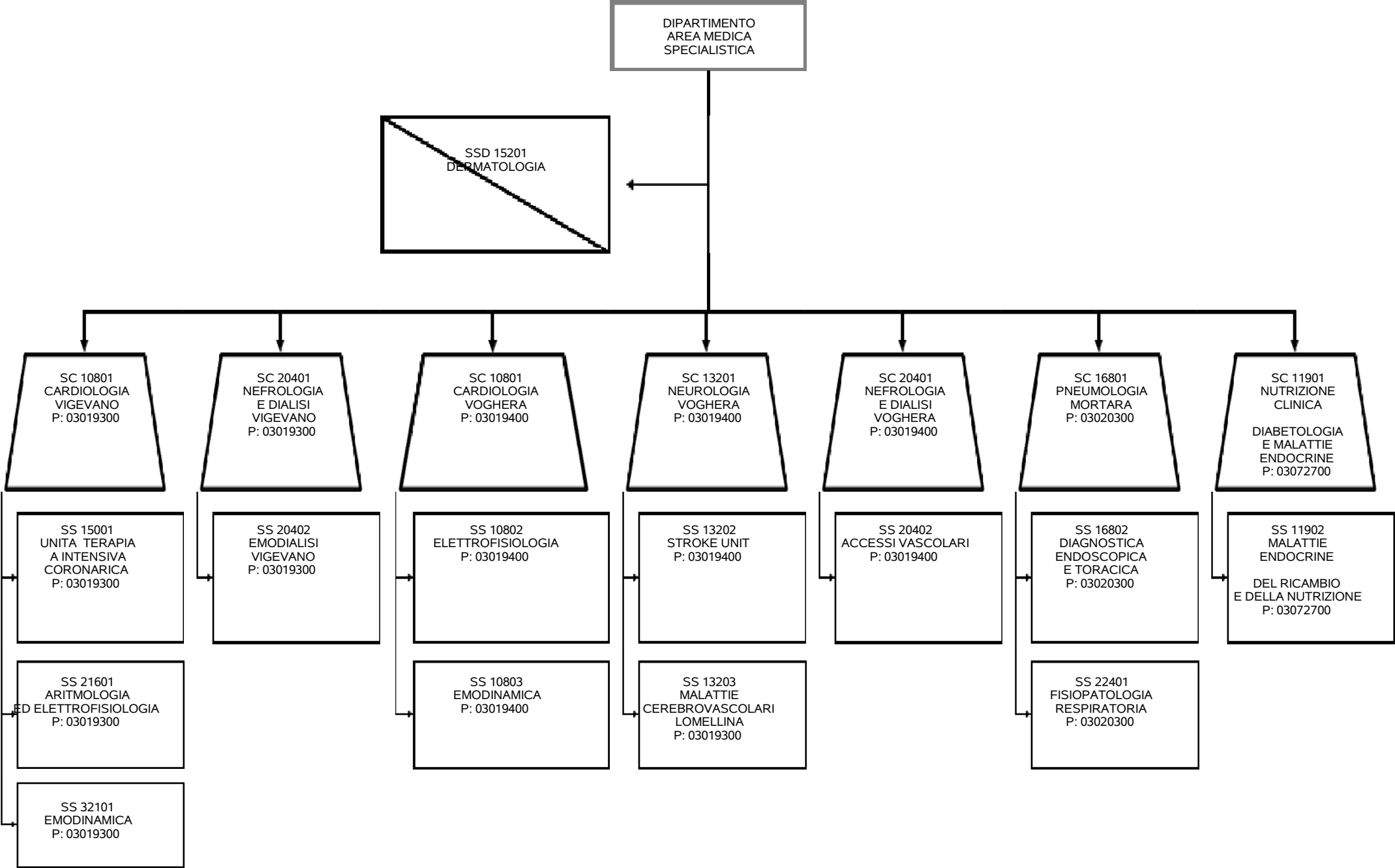


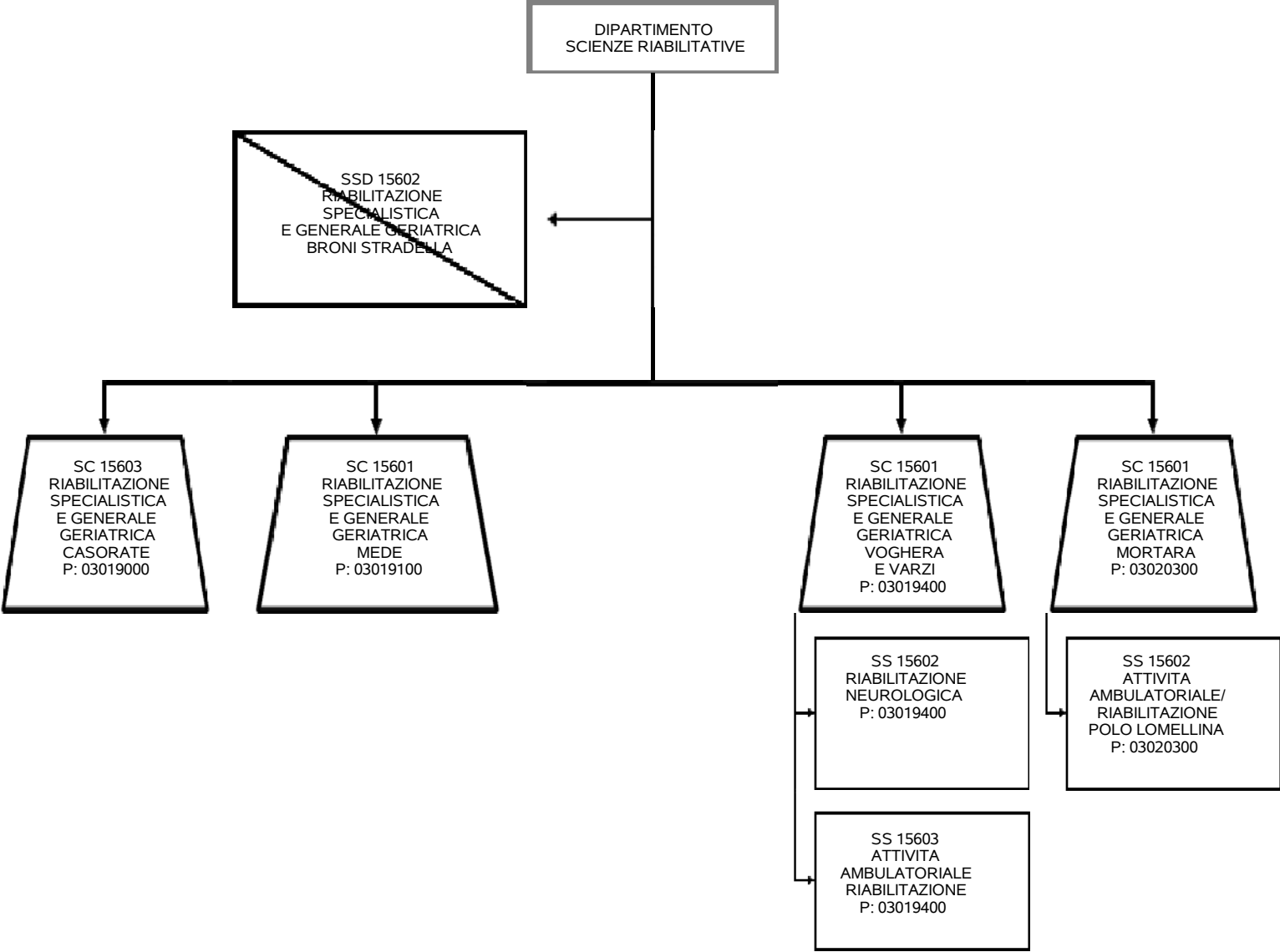


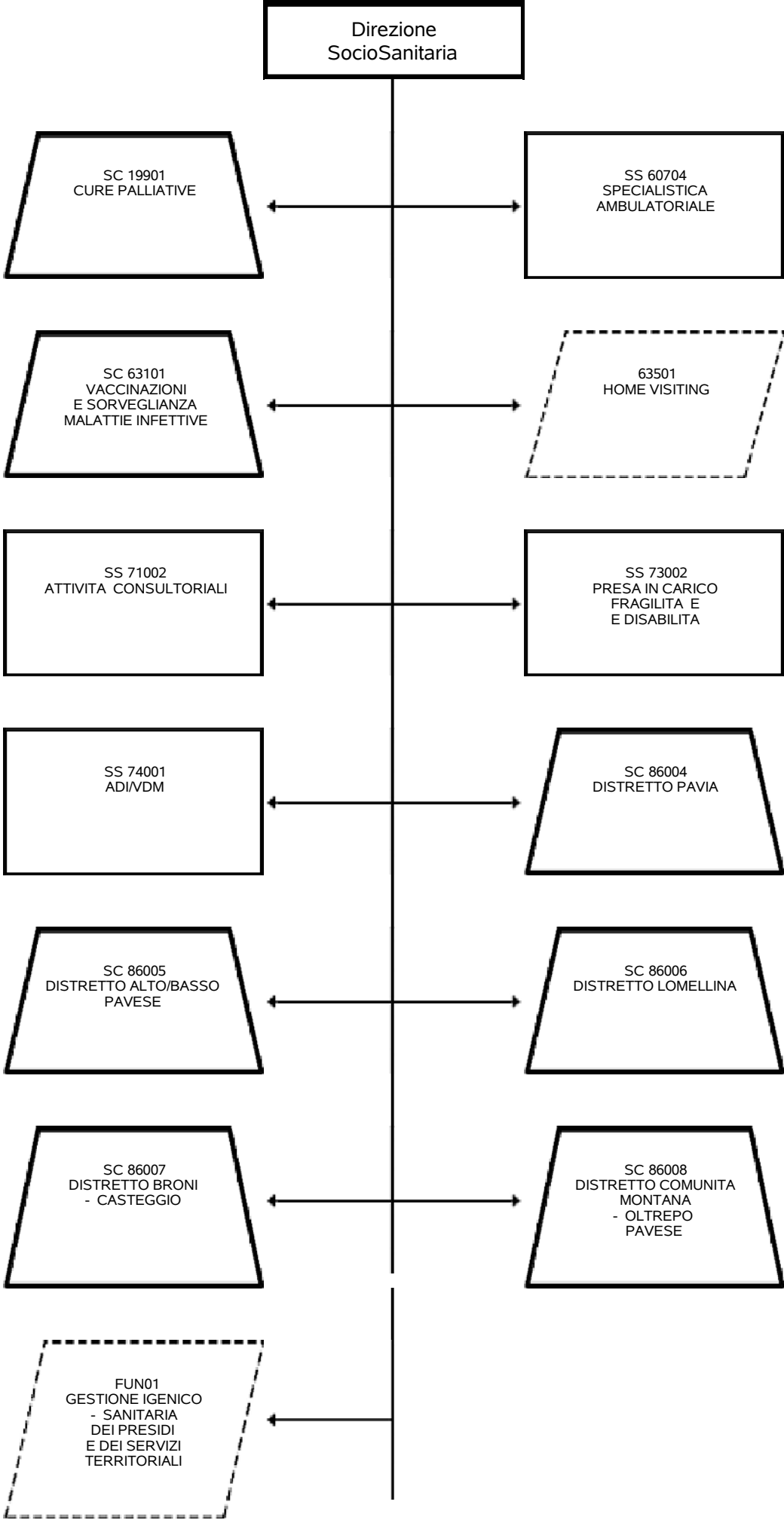


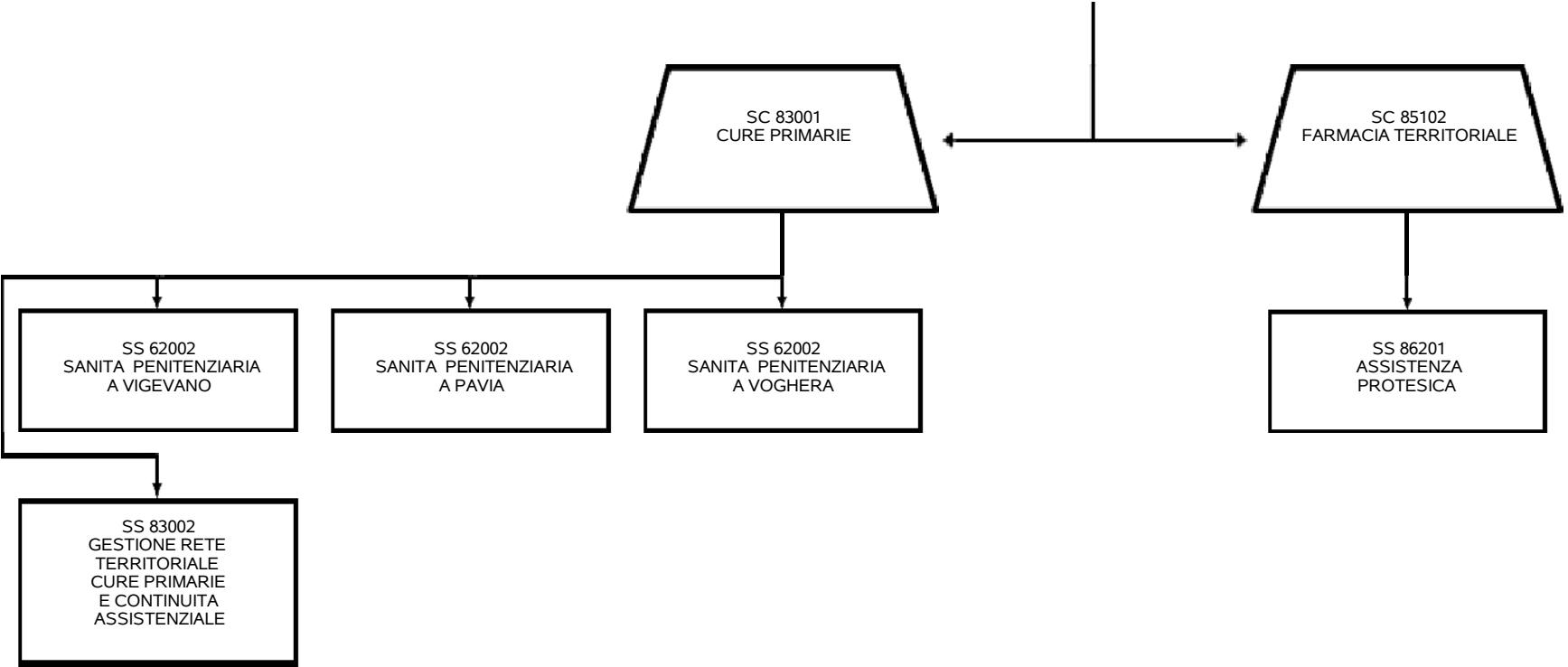


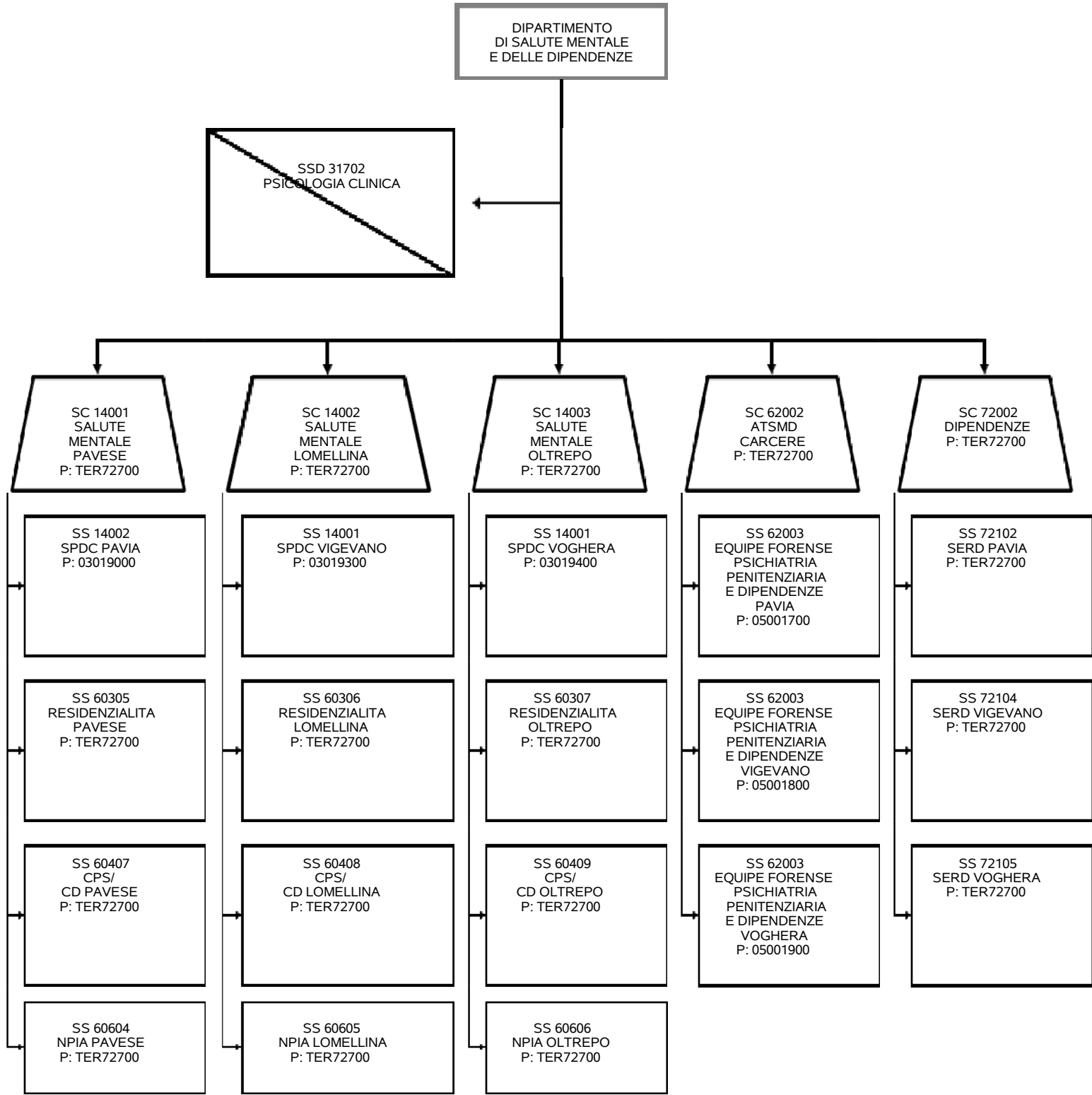


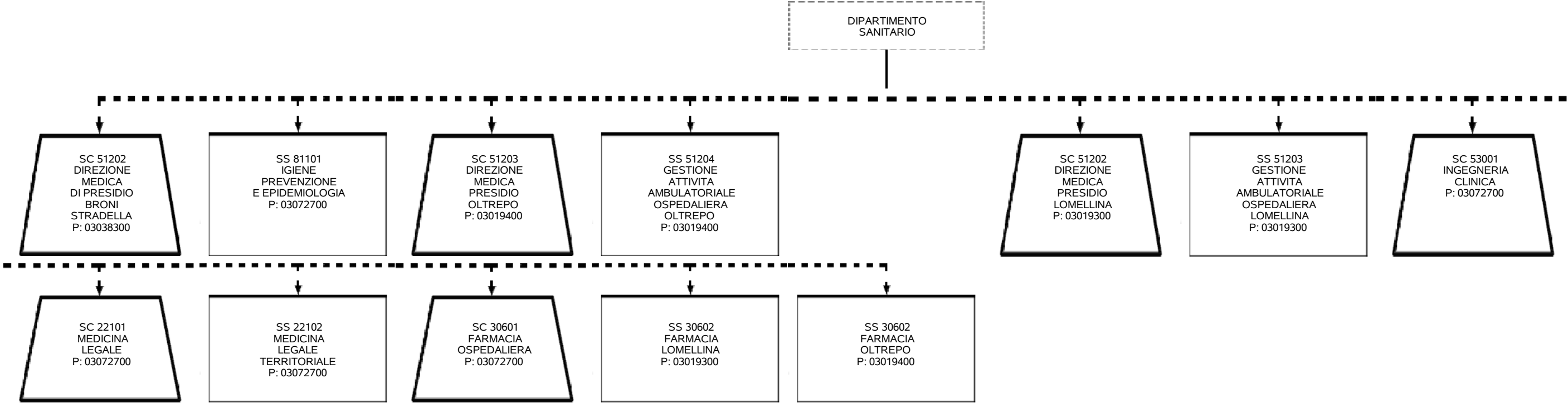


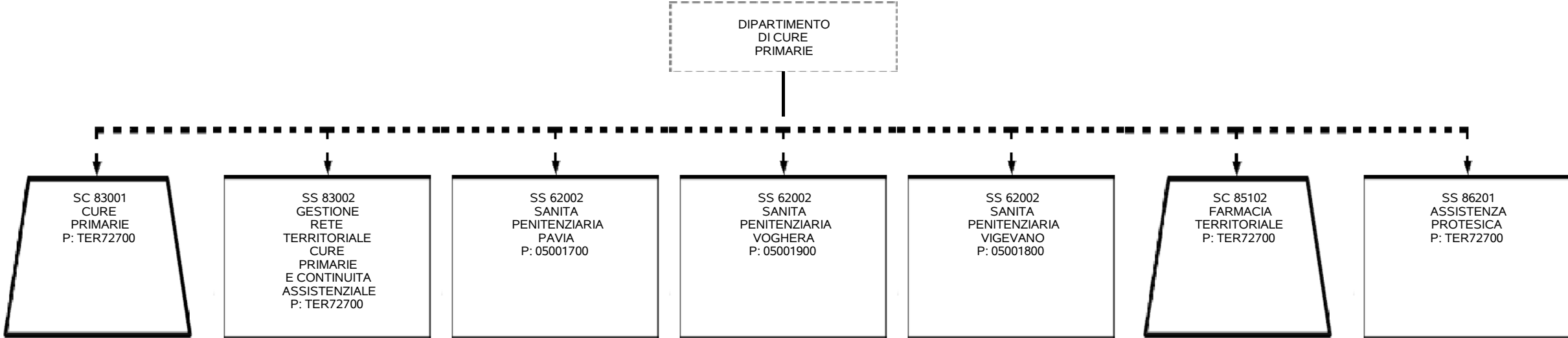


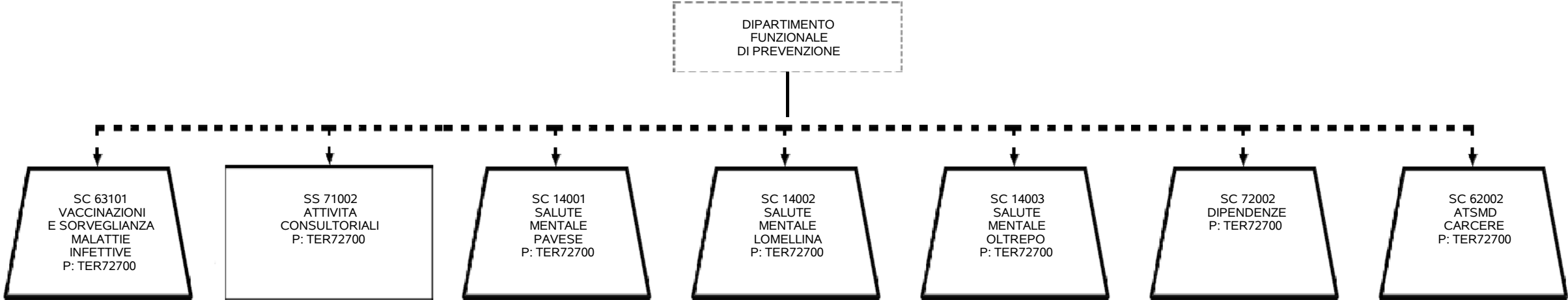


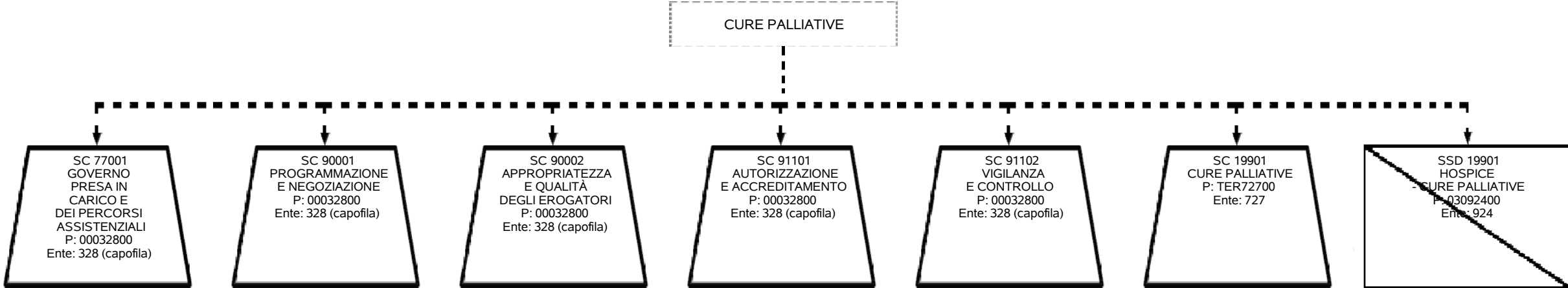


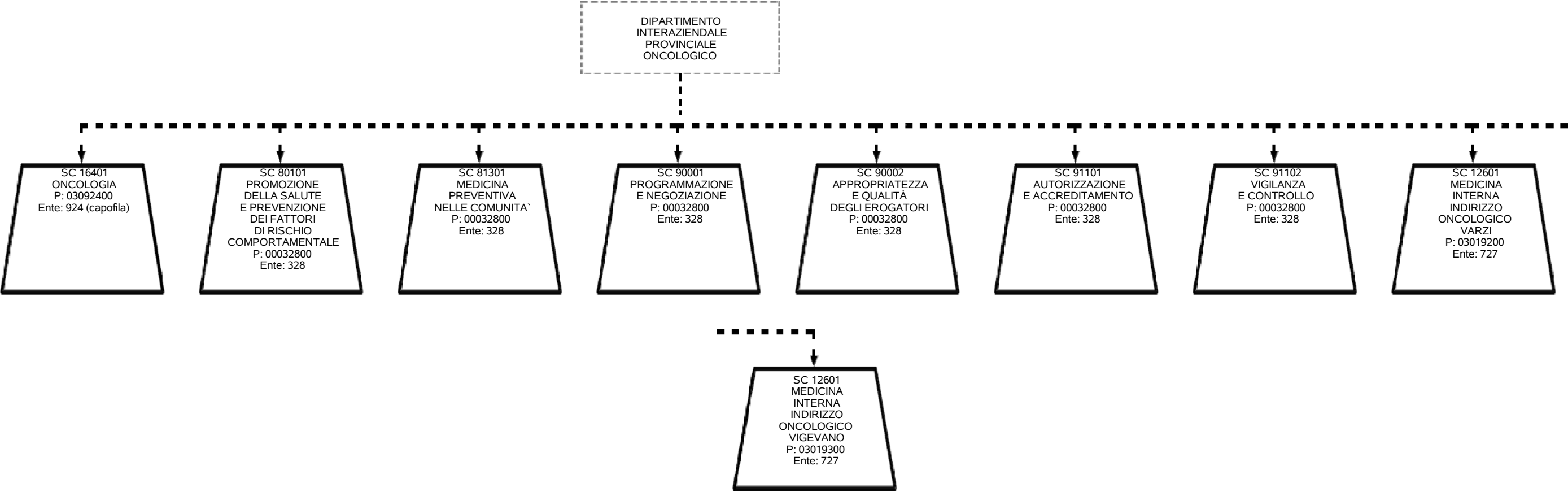


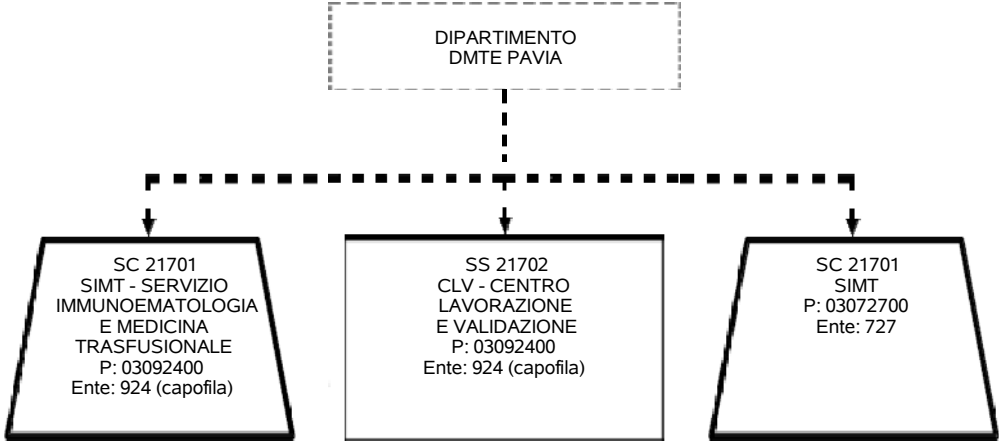


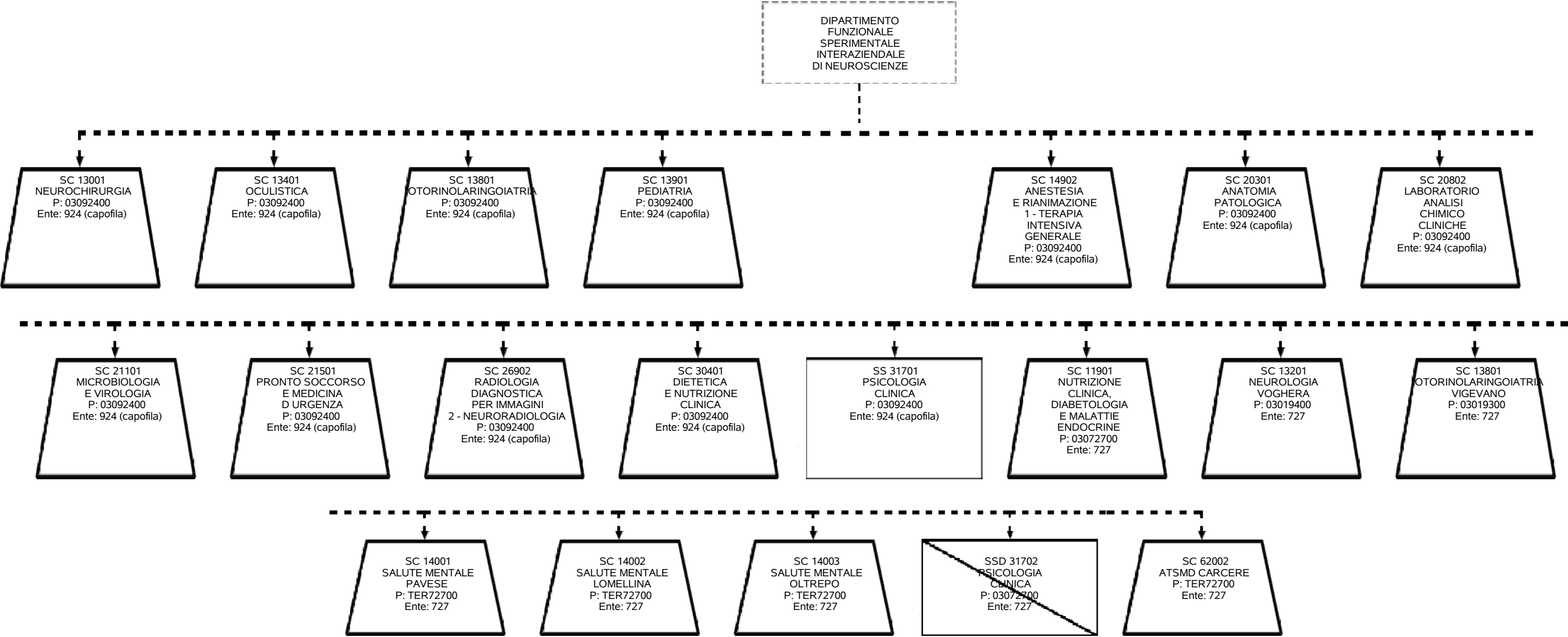












Codice Funzione	Descrizione Funzione	Codice Staff di Direzione	Descrizione Staff di Direzione	Presidio Afferenza SC	Codice Afferenza SC	Descrizione Afferenza SC
50301	FUNZIONI DI CULTO	SDG01	STAFF DELLA DIREZIONE GENERALE			
528B01	MEDICO COMPETENTE ED ATTIVITÀ DI SORVEGLIANZA SANITARIA DEL PERSONALE	SDG01	STAFF DELLA DIREZIONE GENERALE			
53101	UFFICIO RELAZIONE COL PUBBLICO (URP)	SDG01	STAFF DELLA DIREZIONE GENERALE			
53201	ATTIVITÀ DI COMUNICAZIONE AZIENDALE E RELAZIONI ESTERNE	SDG01	STAFF DELLA DIREZIONE GENERALE			
54101	INTERNAL AUDITING - SISTEMA CONTROLLI INTERNI	SDG01	STAFF DELLA DIREZIONE GENERALE			
54201	TRASPARENZA E ANTICORRUZIONE	SDG01	STAFF DELLA DIREZIONE GENERALE			
63501	HOME VISITING	SFS01	STAFF DELLA DIREZIONE SOCIOSANITARIA			
FUN01	GESTIONE IGENICO - SANITARIA DEI PRESIDI E DEI SERVIZI TERRITORIALI	SFS01	STAFF DELLA DIREZIONE SOCIOSANITARIA			

Codice Funzione	Descrizione Funzione	Codice Dipartimento Gestionale	Descrizione Dipartimento Gestionale	Codice Direzione	Descrizione Direzione	Presidio Afferenza SC	Codice Afferenza SC	Descrizione Afferenza SC
FUN02	AREU	DEA01	DIPARTIMENTO AREA EMERGENZA - URGENZA	DS	Direzione Sanitaria			