

Organigramma Proposto

2022 - 2024

711 - ASST DELLA VALLE OLONA

Sistema Socio Sanitario



Regione
Lombardia

Legenda



Dipartimento Gestionale



Dipartimento Funzionale



SC – Struttura Complessa



SSD – Struttura Semplice Dipartimentale



SS – Struttura Semplice



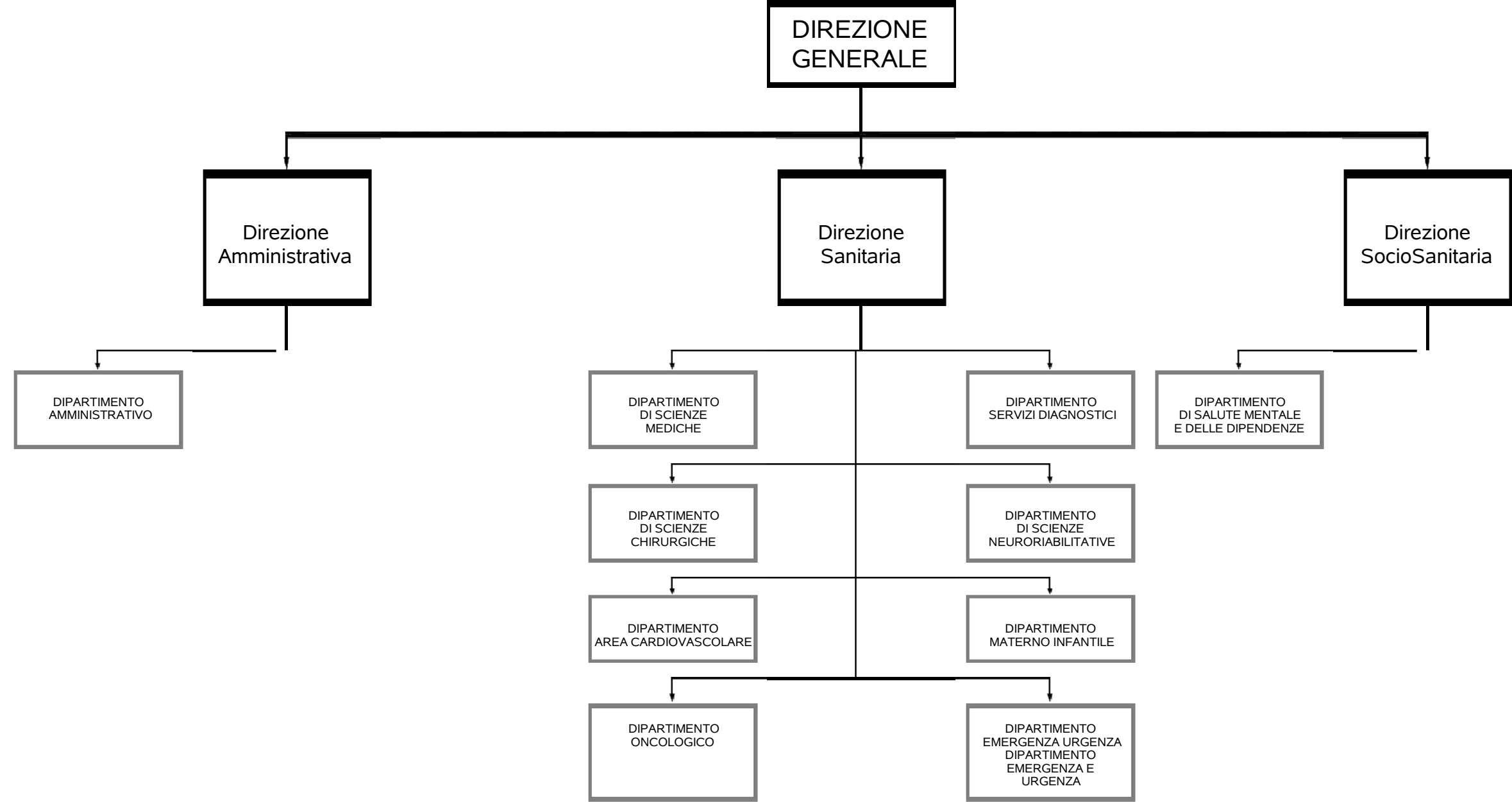
SD – Struttura Semplice Distrettuale

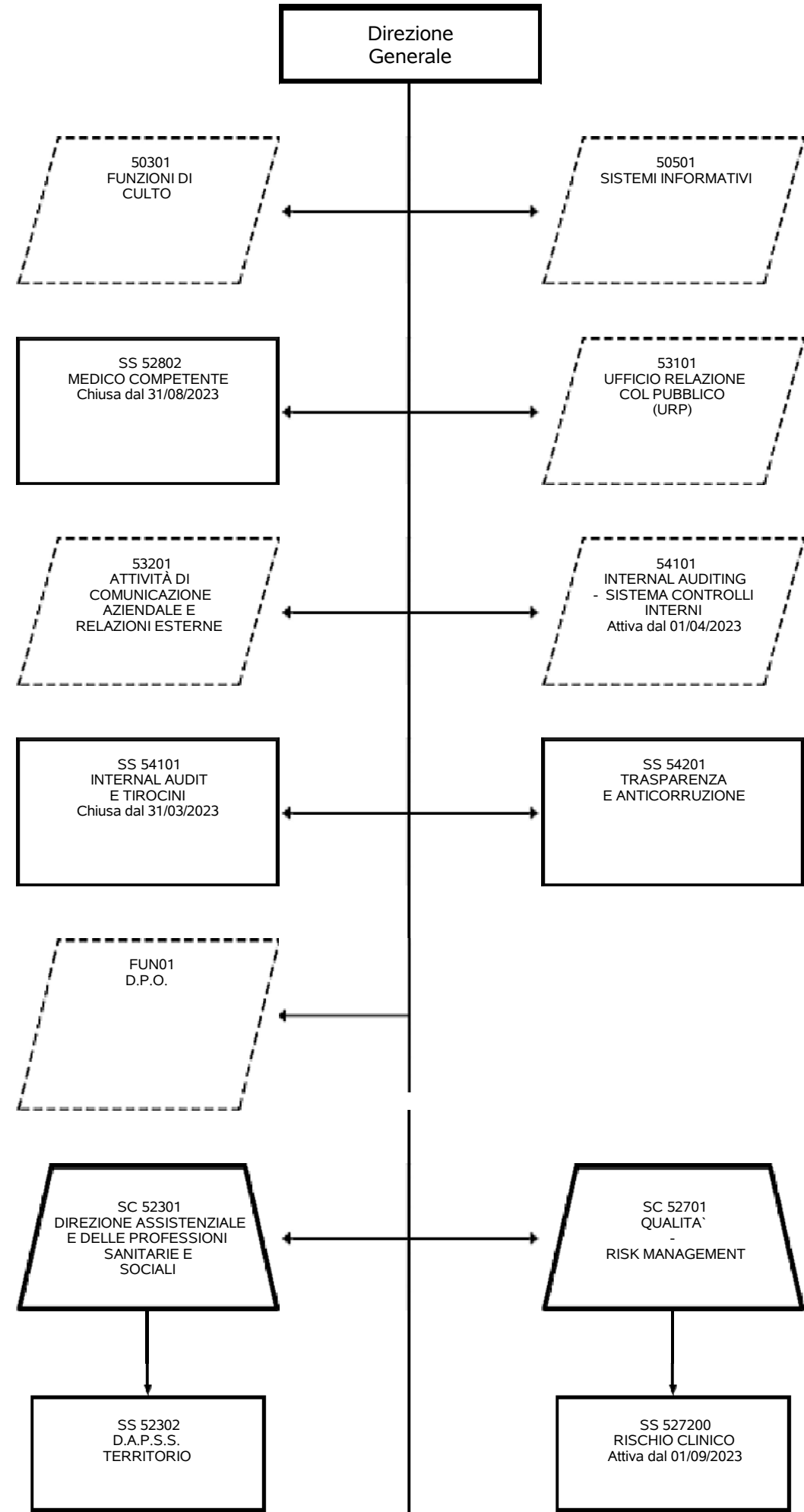


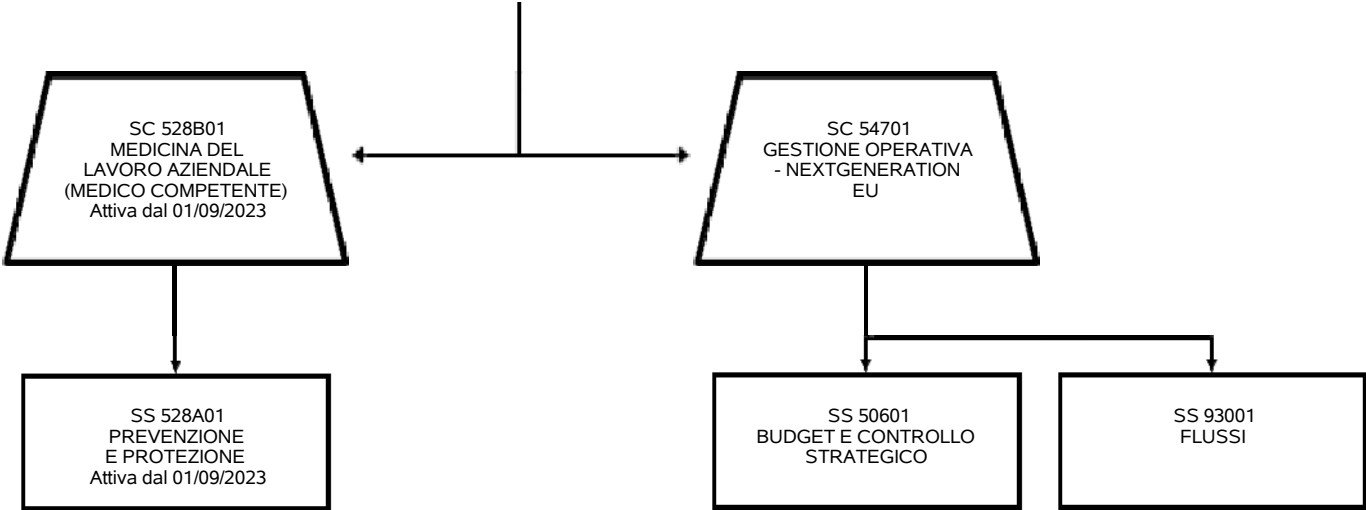
Funzione

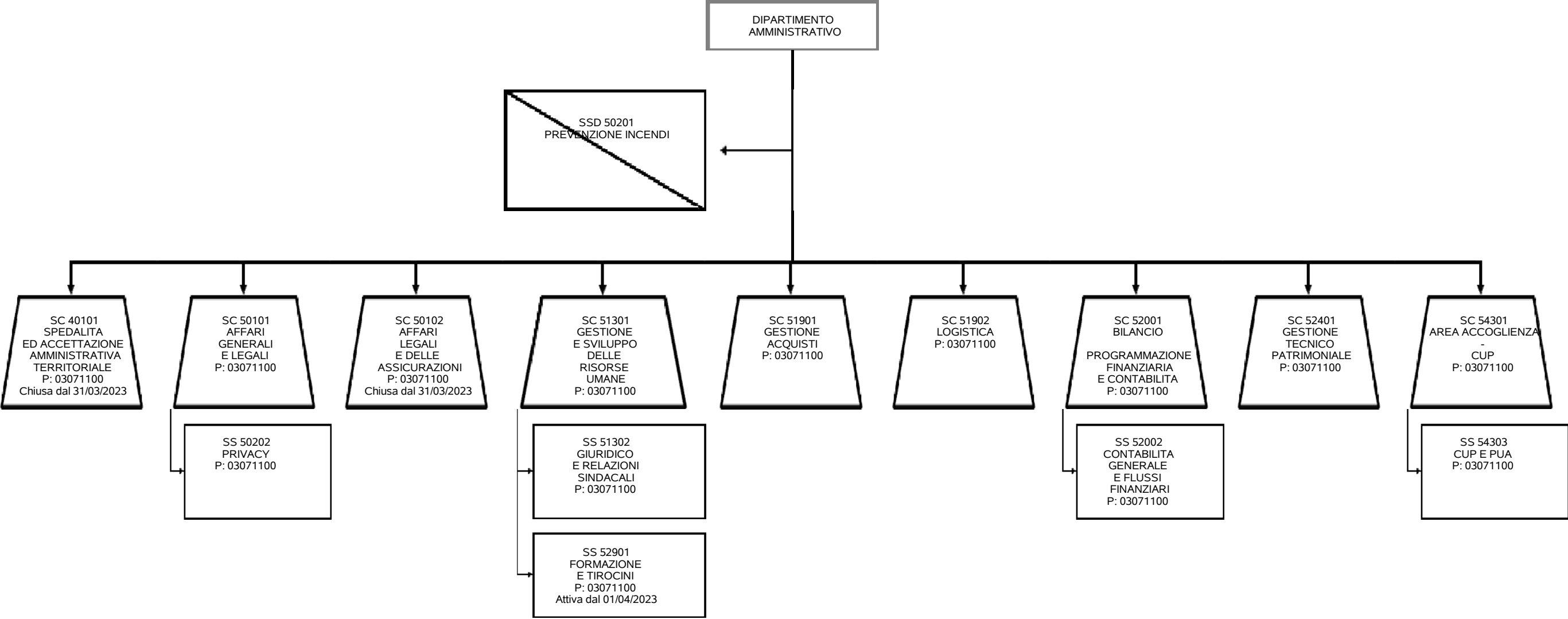


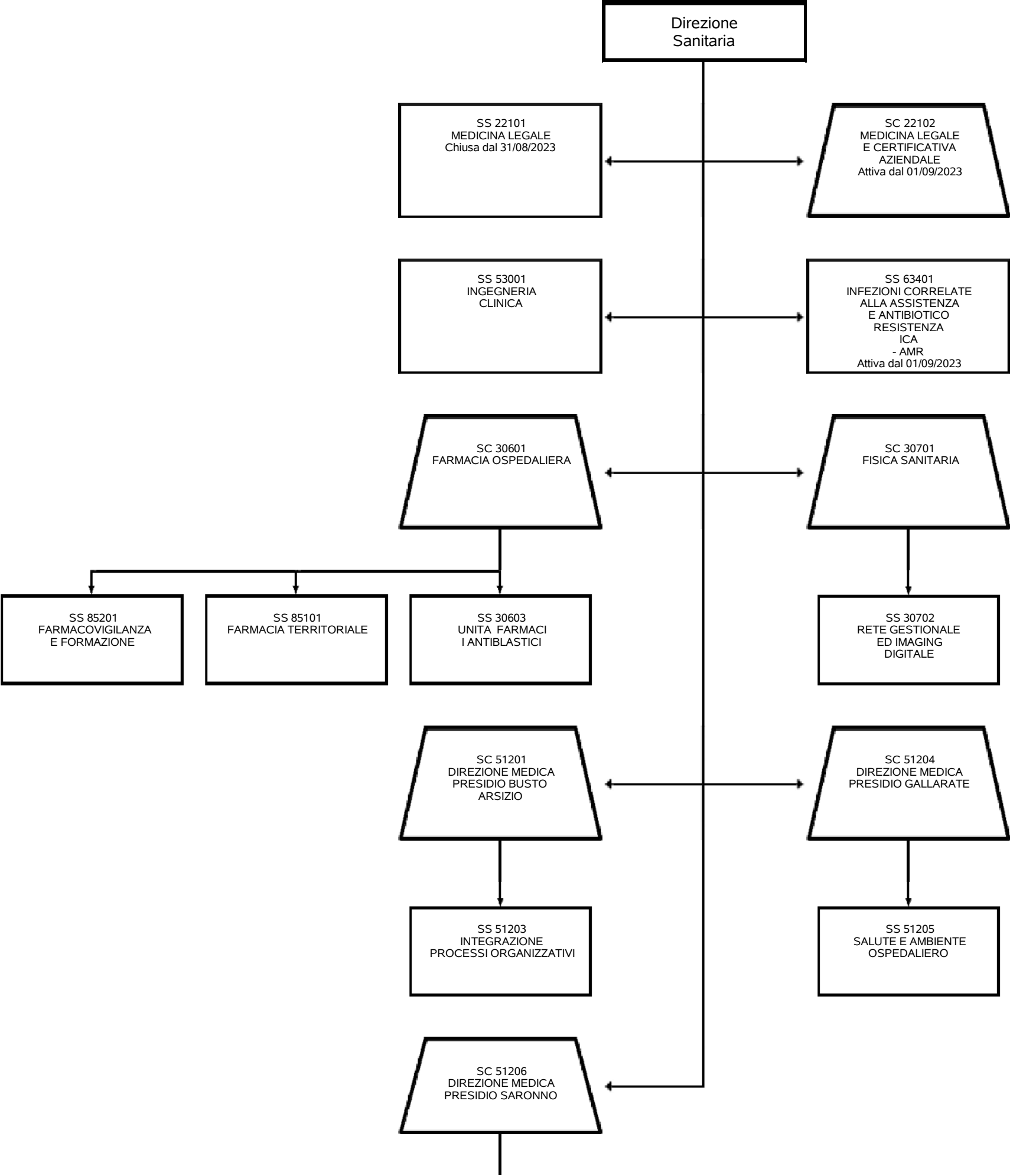
Relazione Funzionale



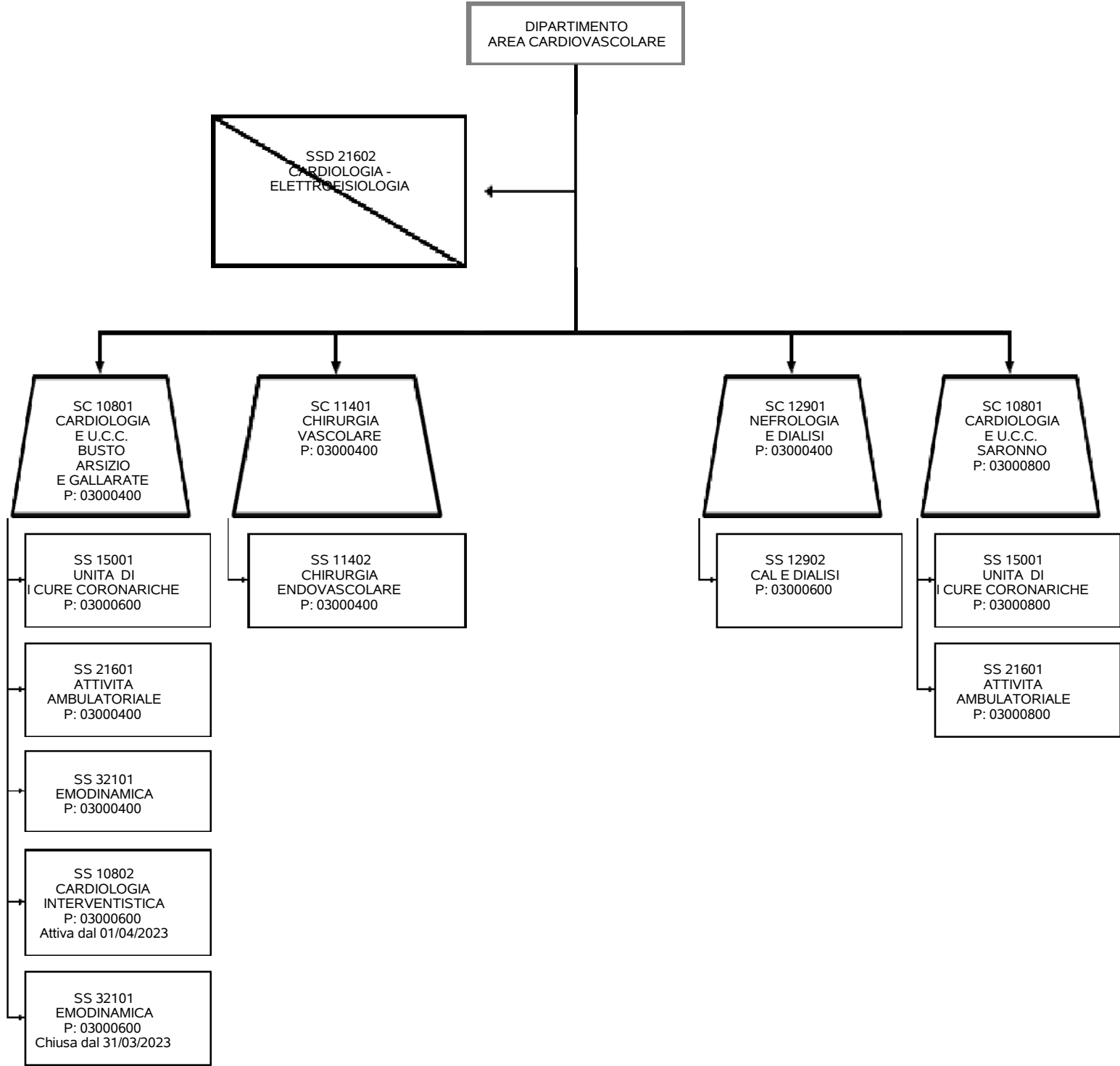


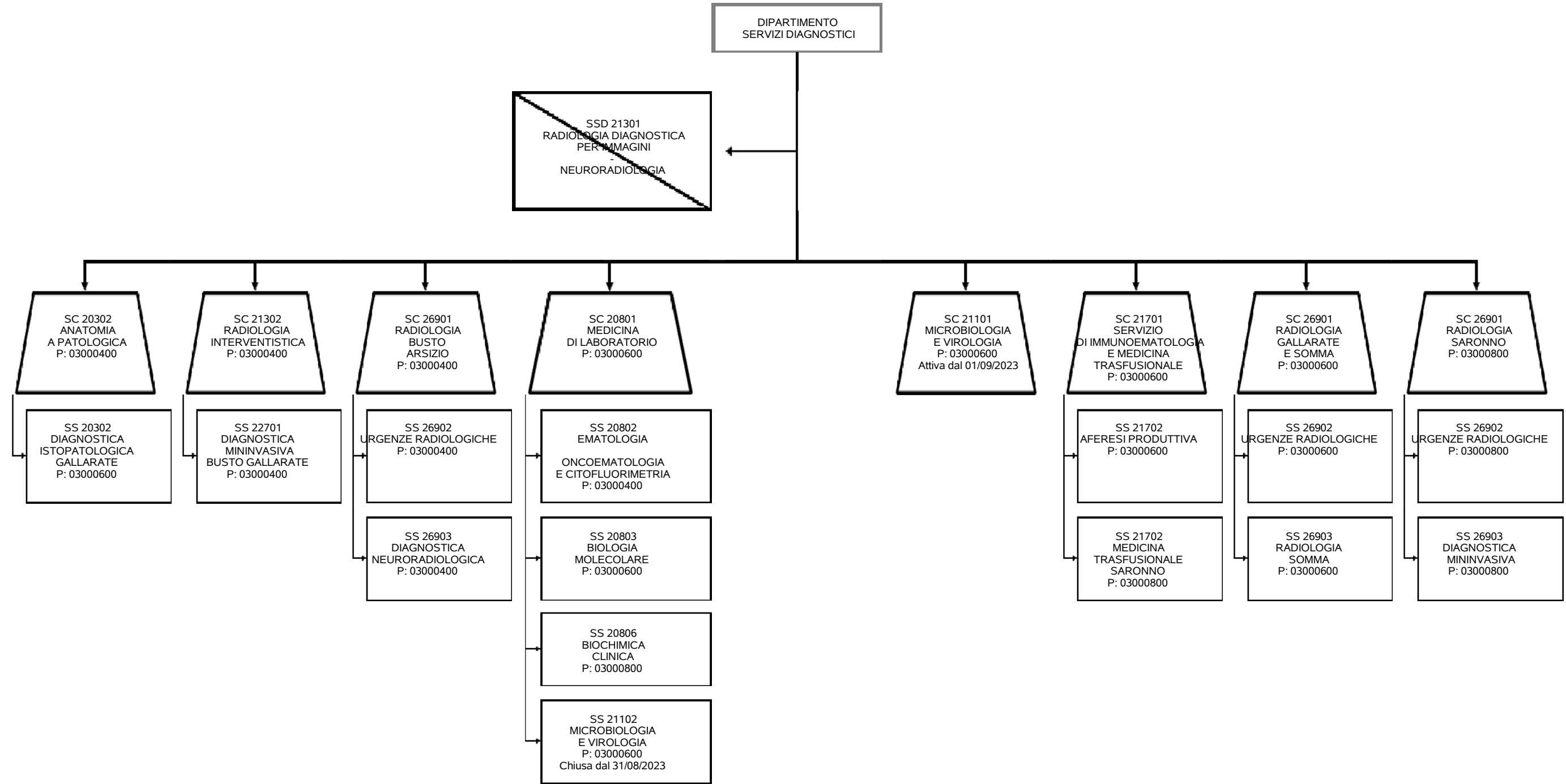


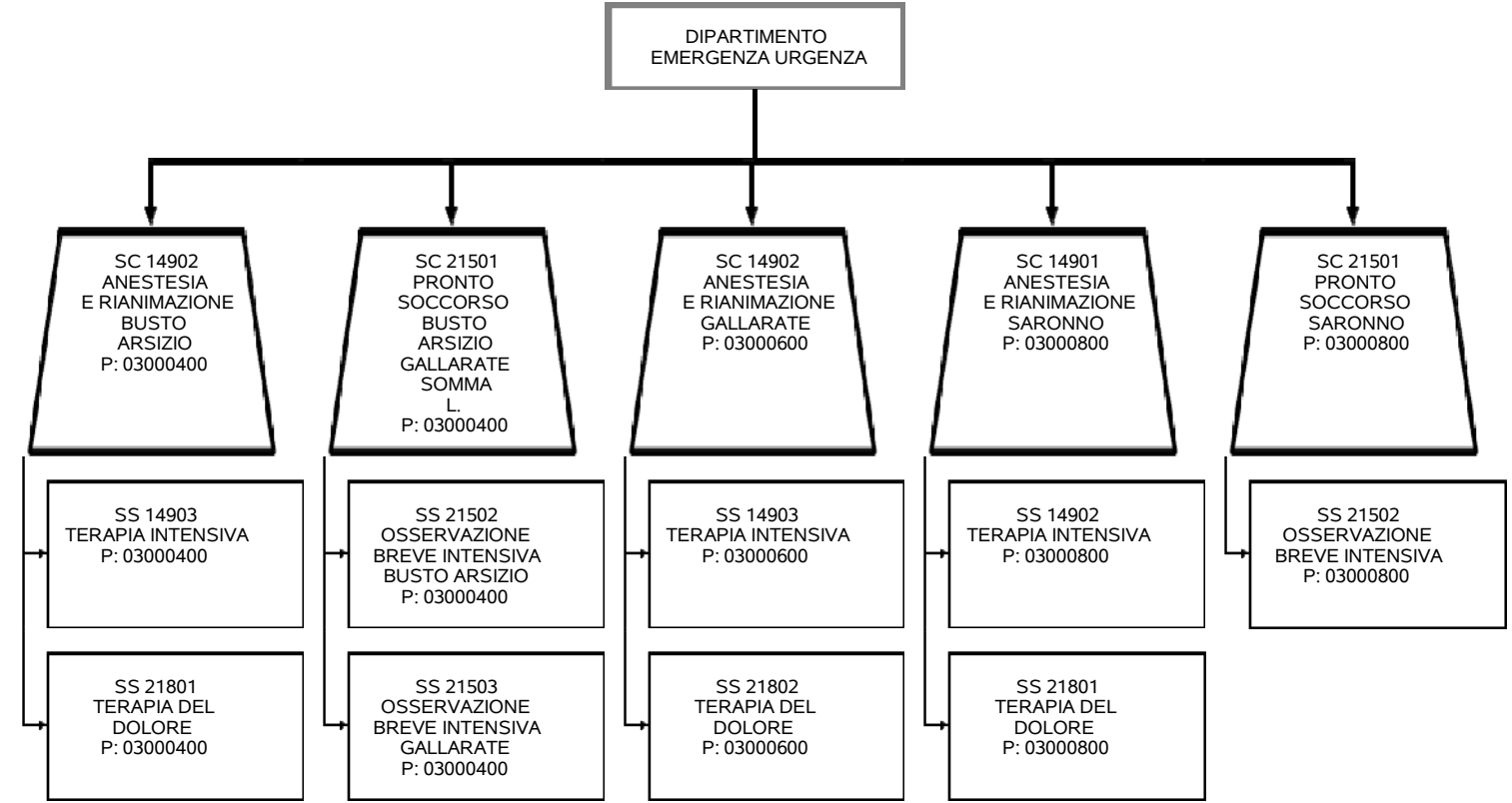


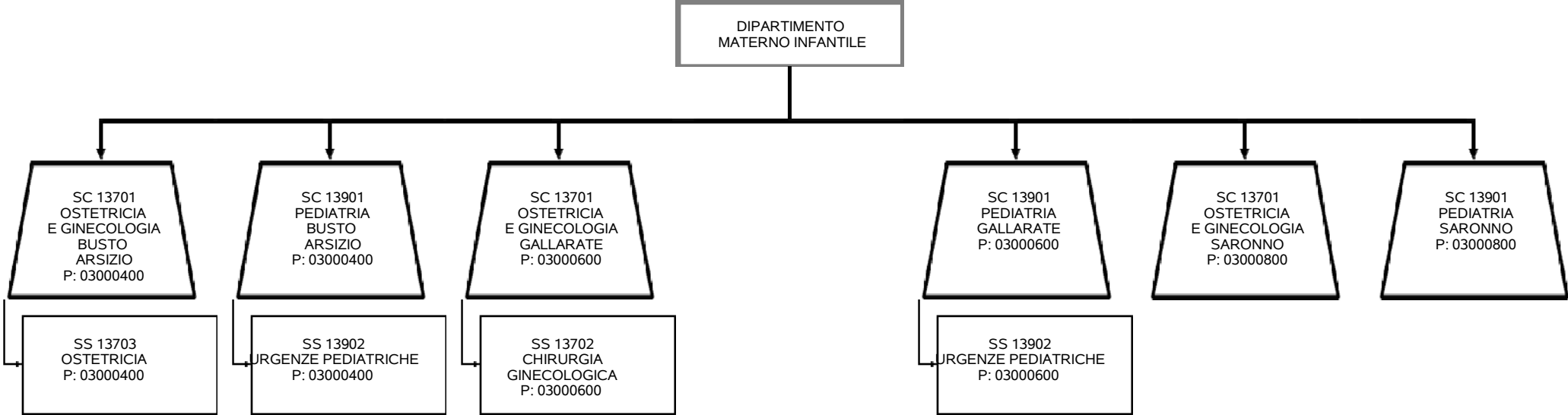


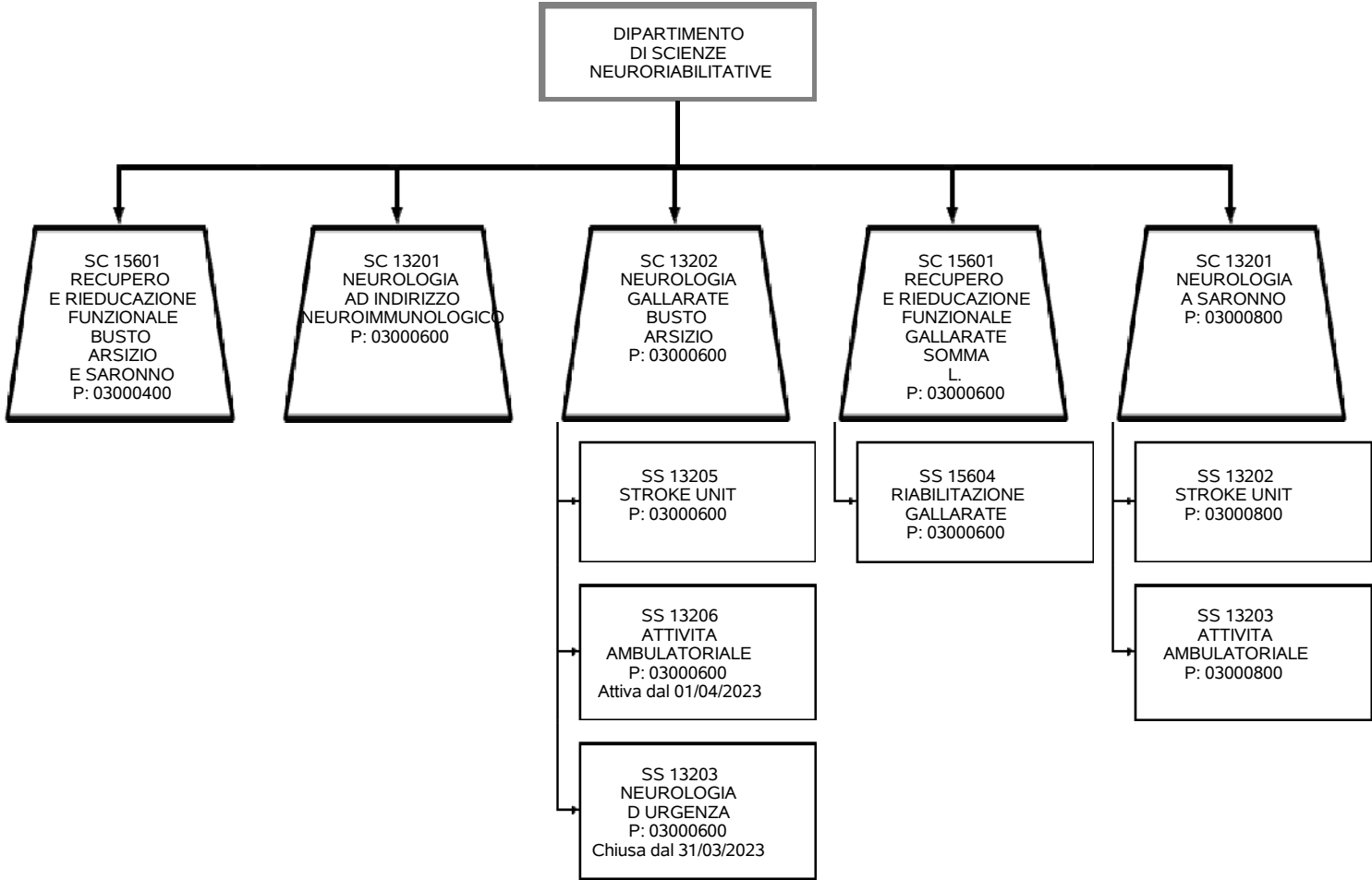


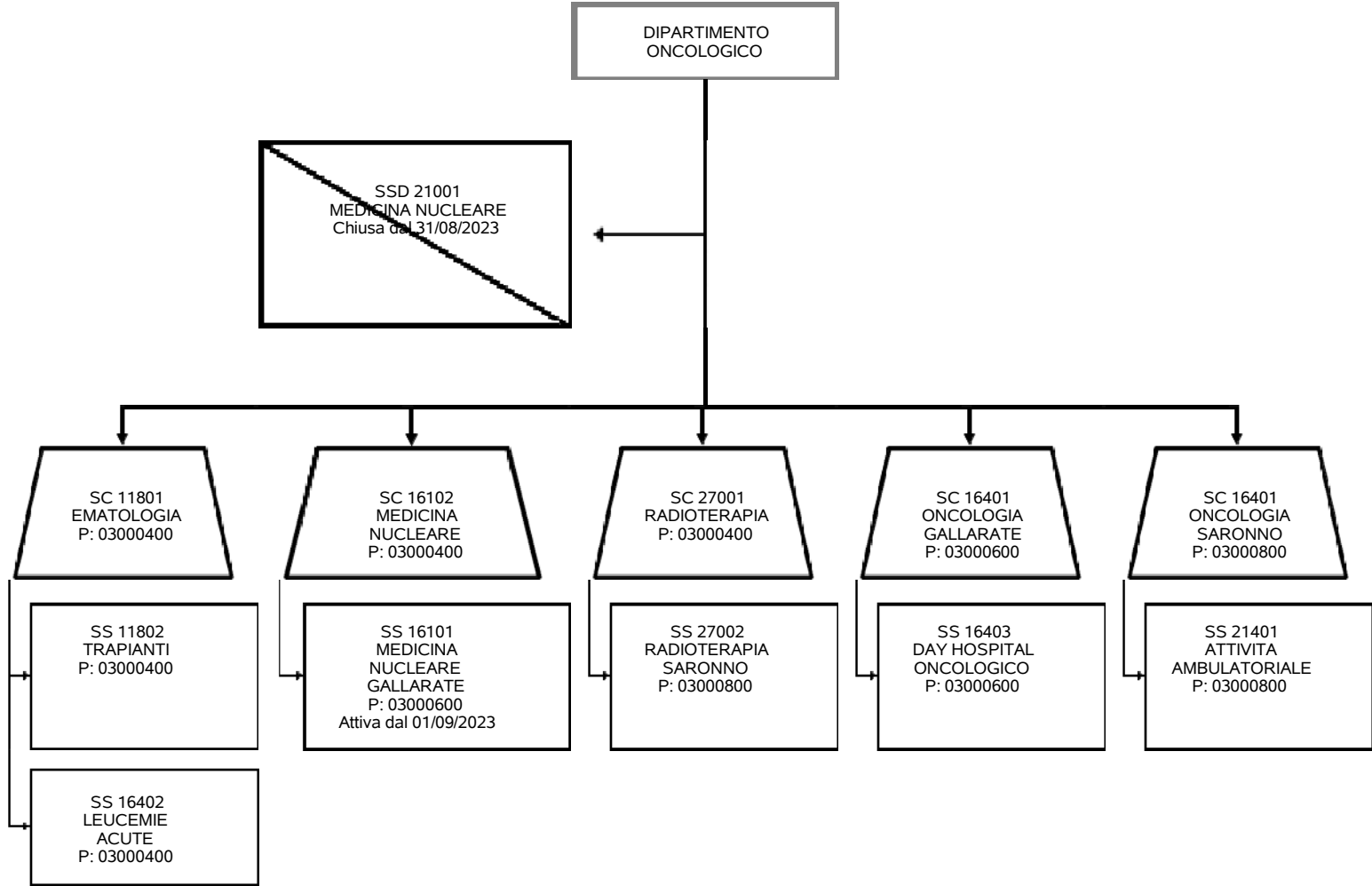


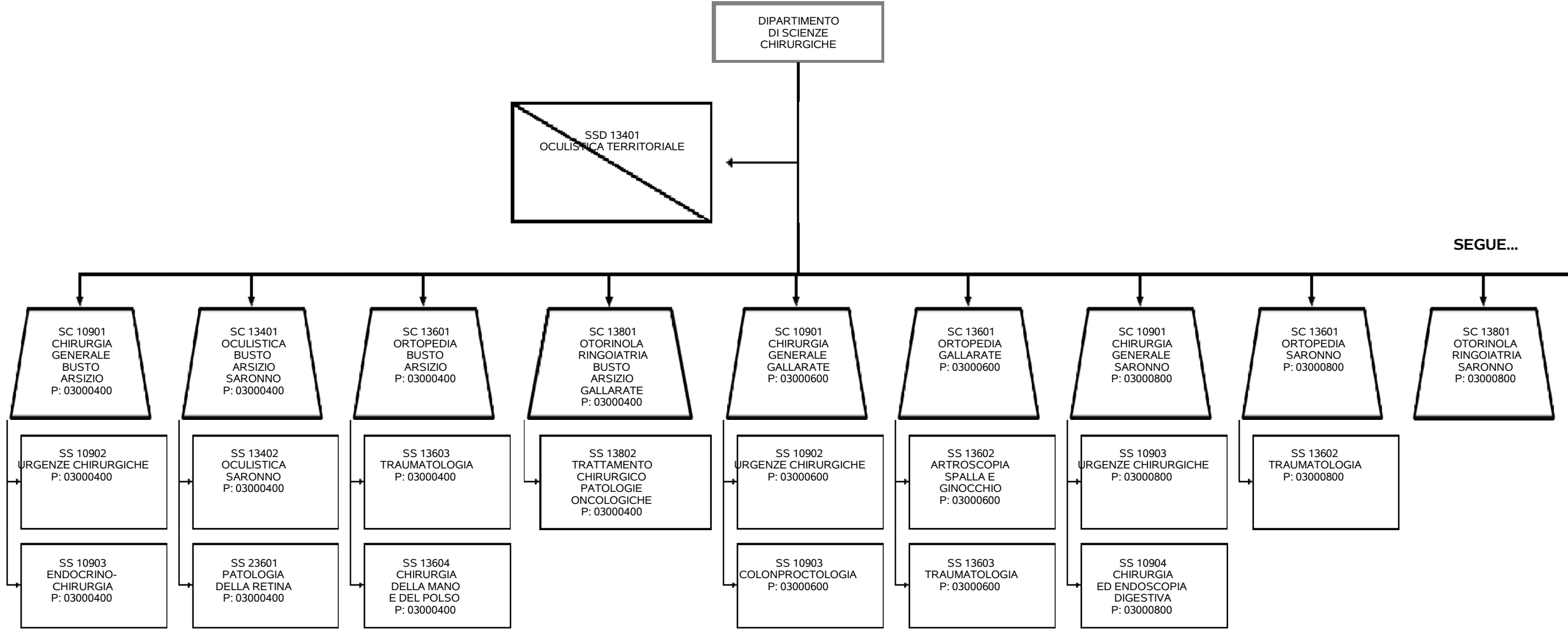


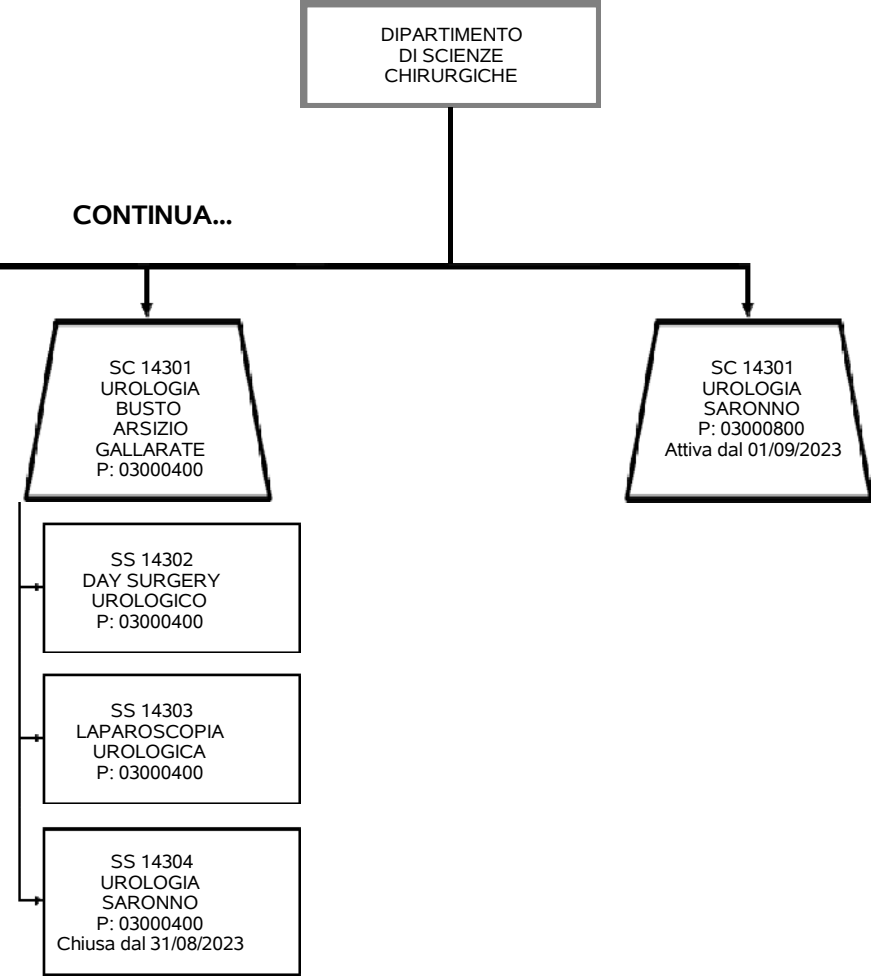


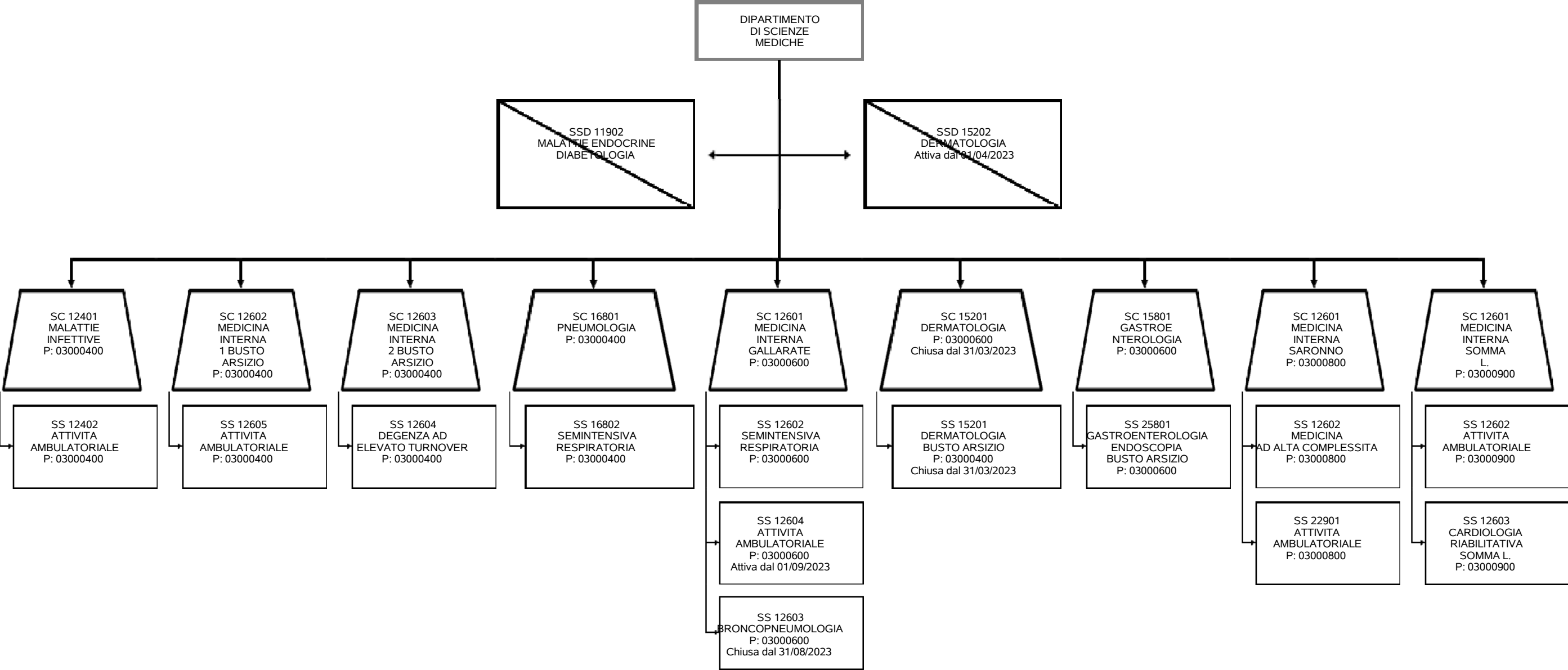


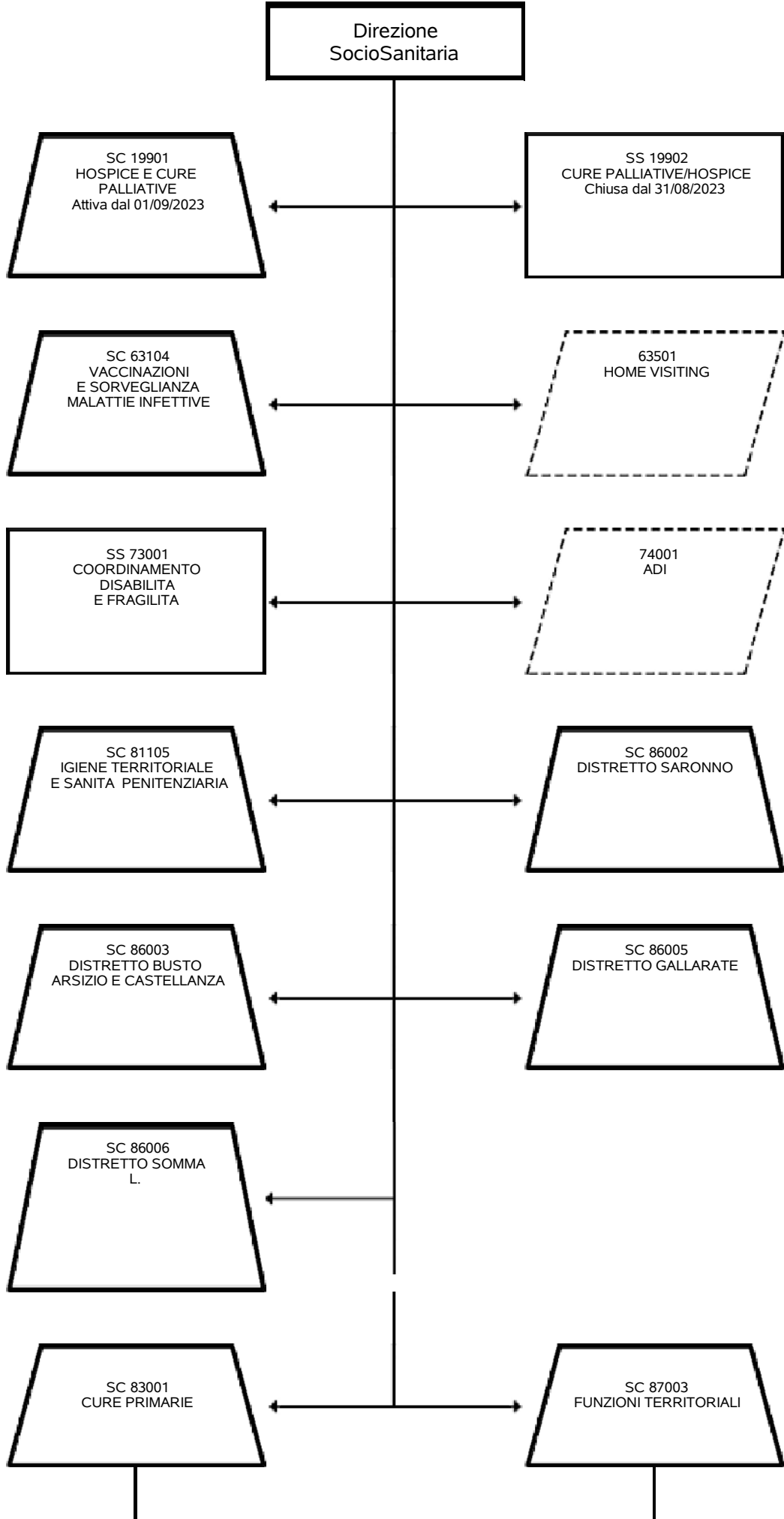


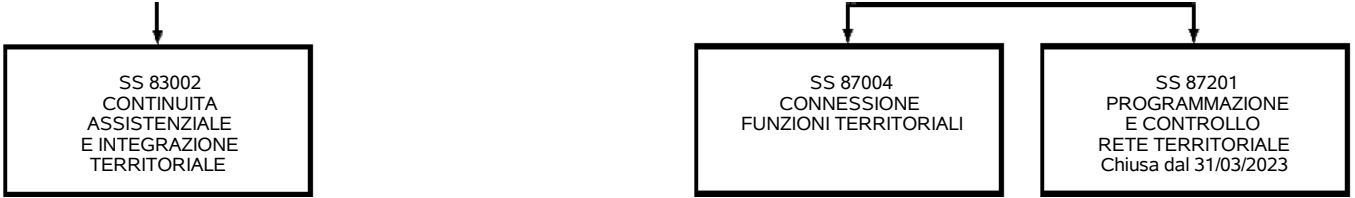


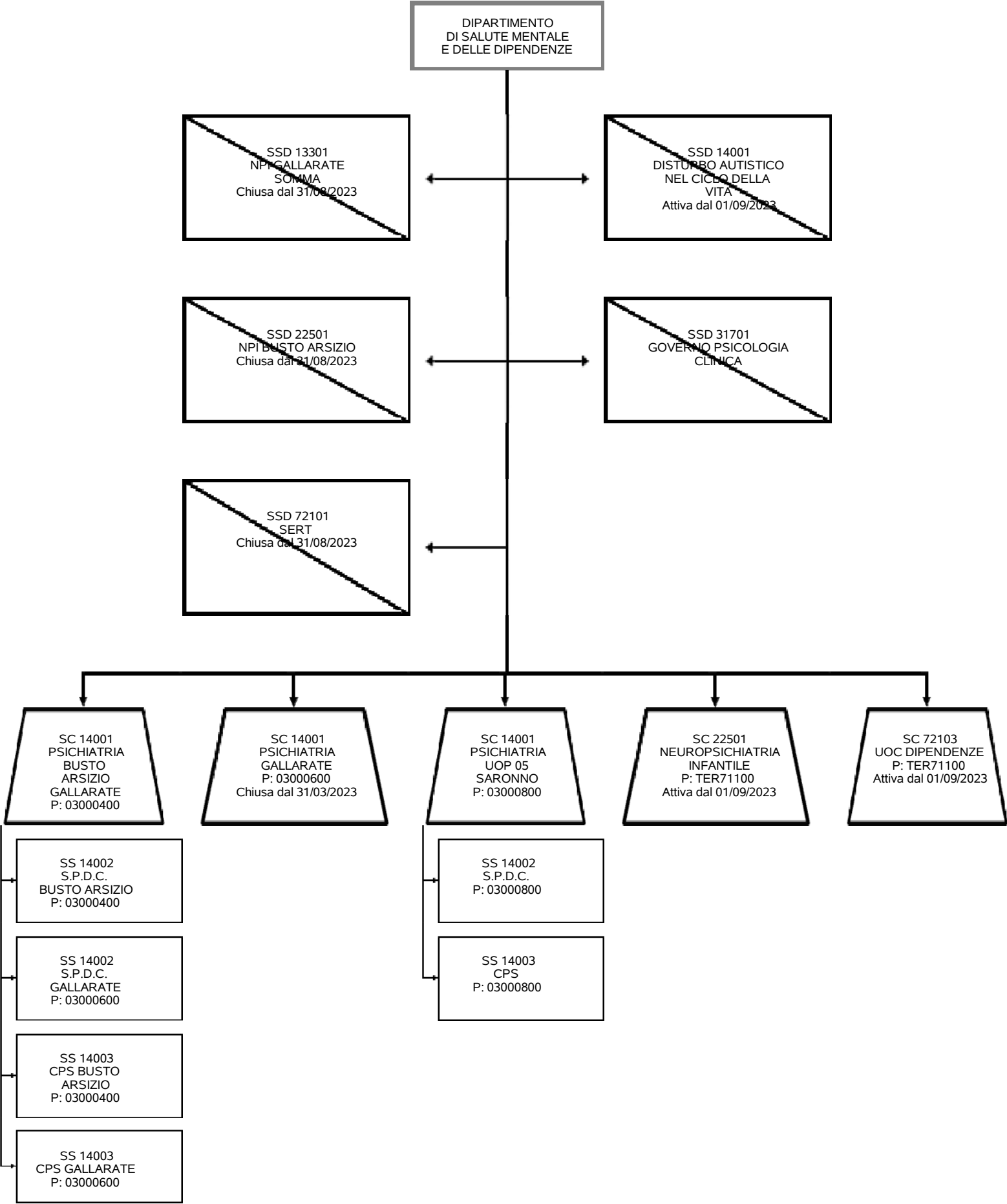


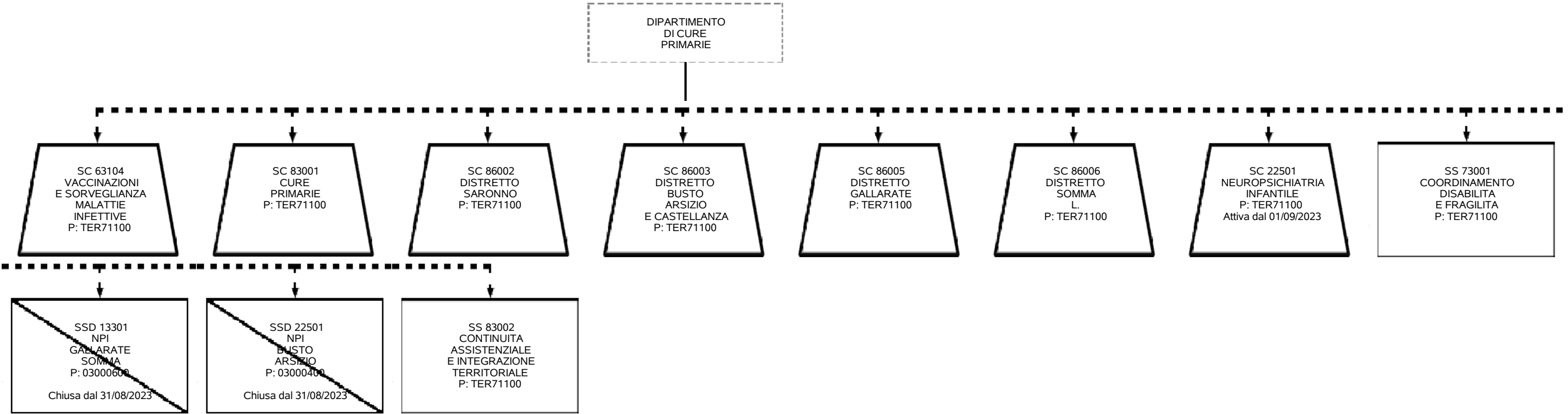


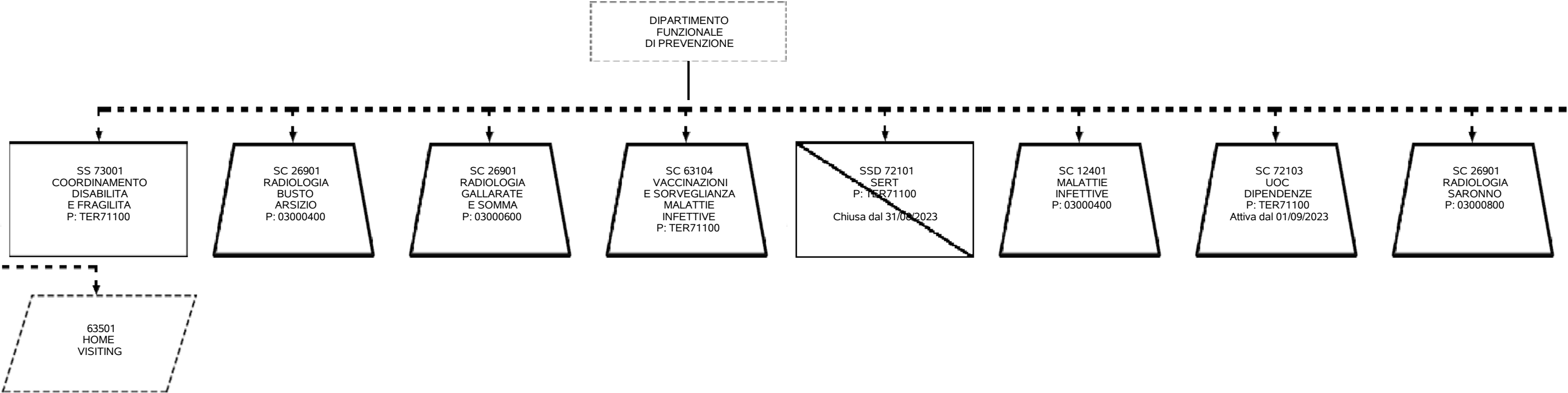


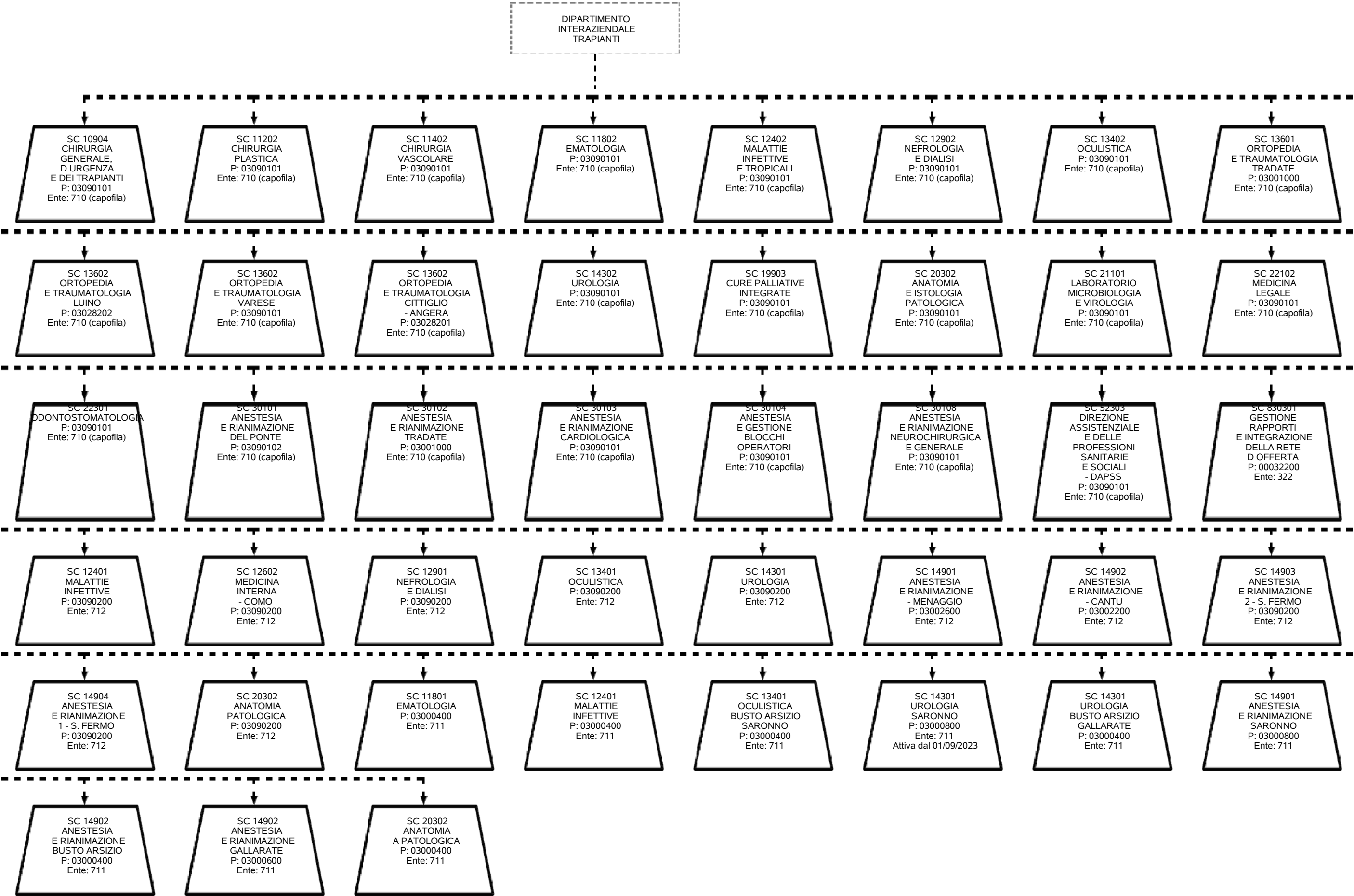


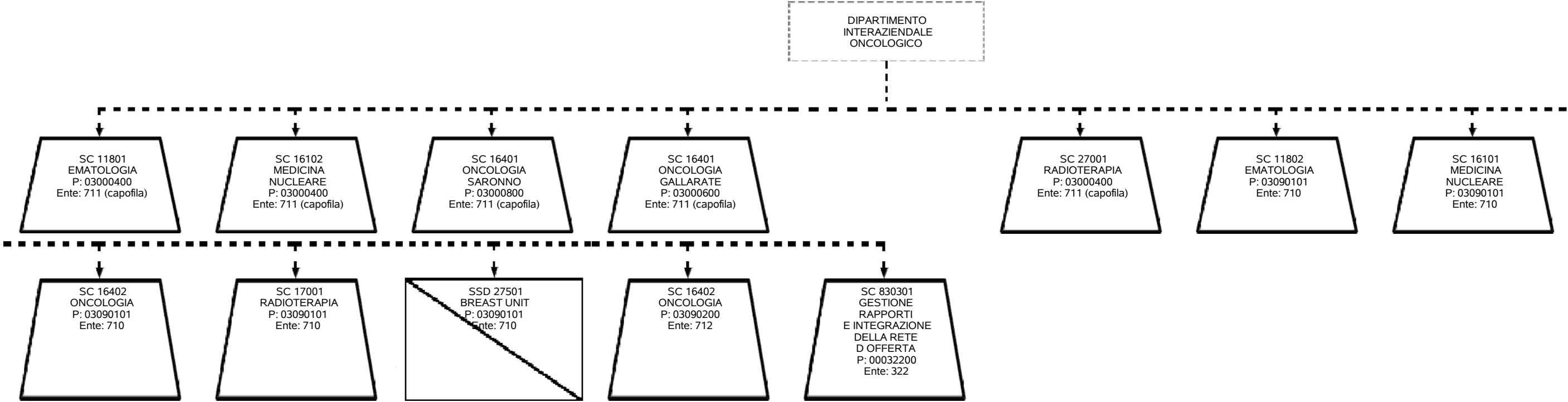


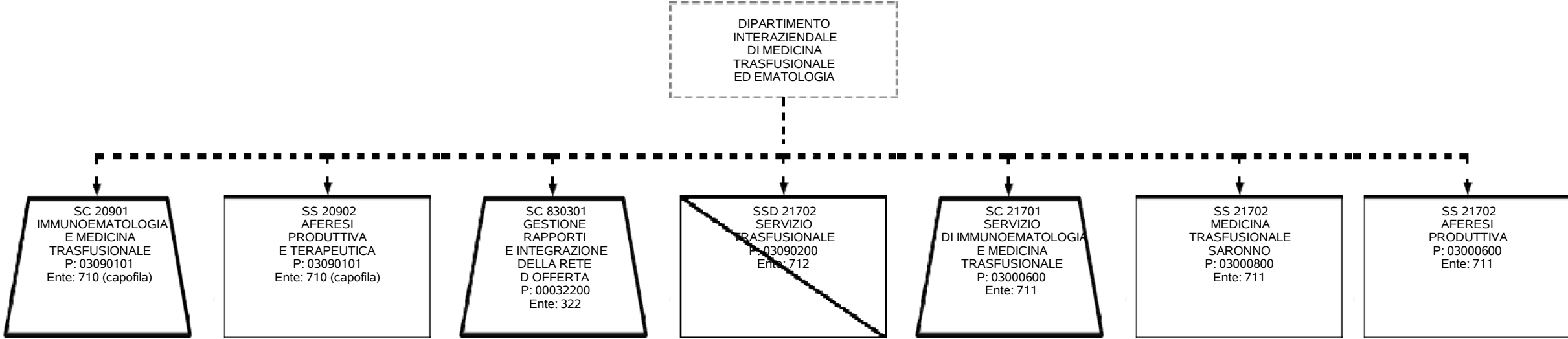


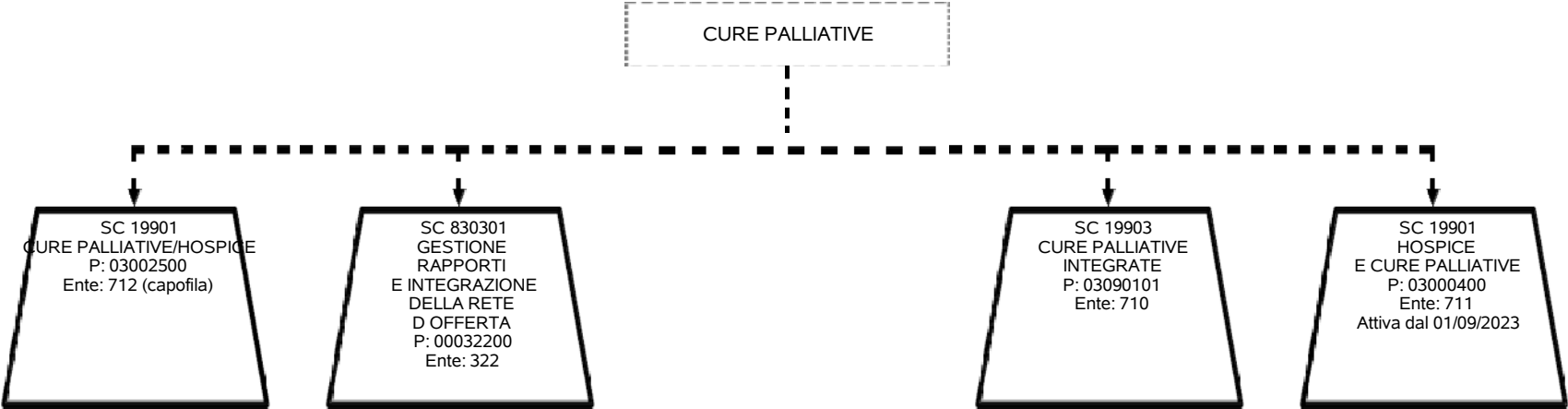












Codice Funzione	Descrizione Funzione	Codice Staff di Direzione	Descrizione Staff di Direzione	Presidio Afferenza SC	Codice Afferenza SC	Descrizione Afferenza SC
50301	FUNZIONI DI CULTO	SDG01	STAFF DELLA DIREZIONE GENERALE			
50501	SISTEMI INFORMATIVI	SDG01	STAFF DELLA DIREZIONE GENERALE			
53101	UFFICIO RELAZIONE COL PUBBLICO (URP)	SDG01	STAFF DELLA DIREZIONE GENERALE			
53201	ATTIVITÀ DI COMUNICAZIONE AZIENDALE E RELAZIONI ESTERNE	SDG01	STAFF DELLA DIREZIONE GENERALE			
54101	INTERNAL AUDITING - SISTEMA CONTROLLI INTERNI	SDG01	STAFF DELLA DIREZIONE GENERALE			
63501	HOME VISITING	SFS01	STAFF DELLA DIREZIONE SOCIOSANITARIA			
74001	ADI	SFS01	STAFF DELLA DIREZIONE SOCIOSANITARIA			
FUN01	D.P.O.	SDG01	STAFF DELLA DIREZIONE GENERALE			